



21st ANNUAL CONFERENCE
 28-30 MARCH 2017
 GLOBAL GOALS:
LOCAL ACTION

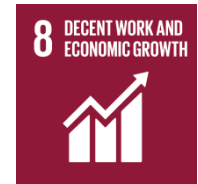


HEADLINE SPONSOR



Incorporating the Sustainable Development Goals into Institutional Business Decision Making UWE Bristol

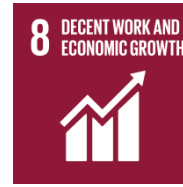
Headline Sponsor



Workshop overview

- **Sustainability in decision-making at UWE**
- **FE/HE and the SDGs**
- **Expectations of students**
- **Overview of UWE work with SDGs**
- **Assessment and measurement**
- **What next?**

Sustainability in decision-making at UWE



Institutional strategy

Sustainability Plan

Estates and Procurement

QMEF

Staff and student engagement

SU@UWE

HOW?

WHO?



What is the current status of FE/HE engagement with the SDGs?



What is your institution doing? How is it identifying and managing its contribution to the SDGs?



OTHER?

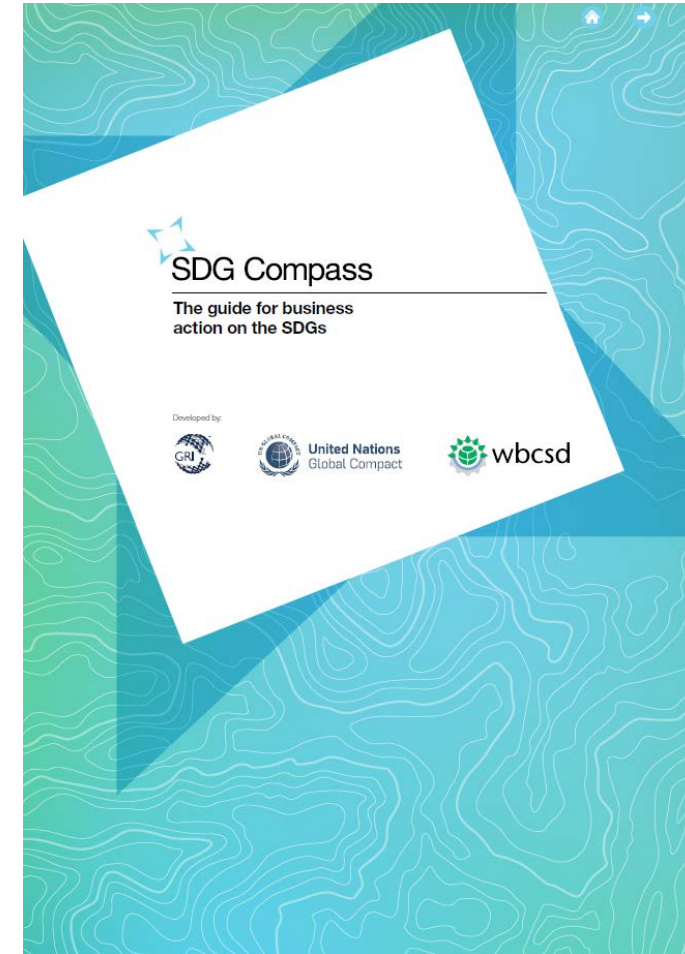


What should FE/HE contribute towards meeting the SDGs?

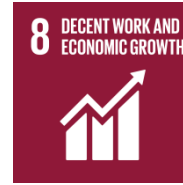


What could an organisation contribute towards meeting the SDGs?

Baseline responsibilities for business include “recognition of the **responsibility of all companies** – regardless of their size, sector or where they operate – to comply with all relevant legislation, **uphold internationally recognized minimum standards** and **to respect universal rights**”



Managing contribution to the SDGs



Map the value chain to identify impact areas

Select indicators and collect data

Define priorities

Defining priorities

Define scope of goals and select KPIs

Define baseline and select goal type

Setting goals

Set level of ambition

Announce commitment to SDGs

Integrating

Anchoring sustainability goals within the business

Embed sustainability across all functions

Reporting and communicating

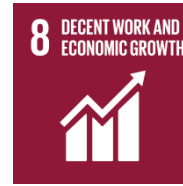
Engage in partnerships

Effective reporting and communication

Communicating on SDG performance

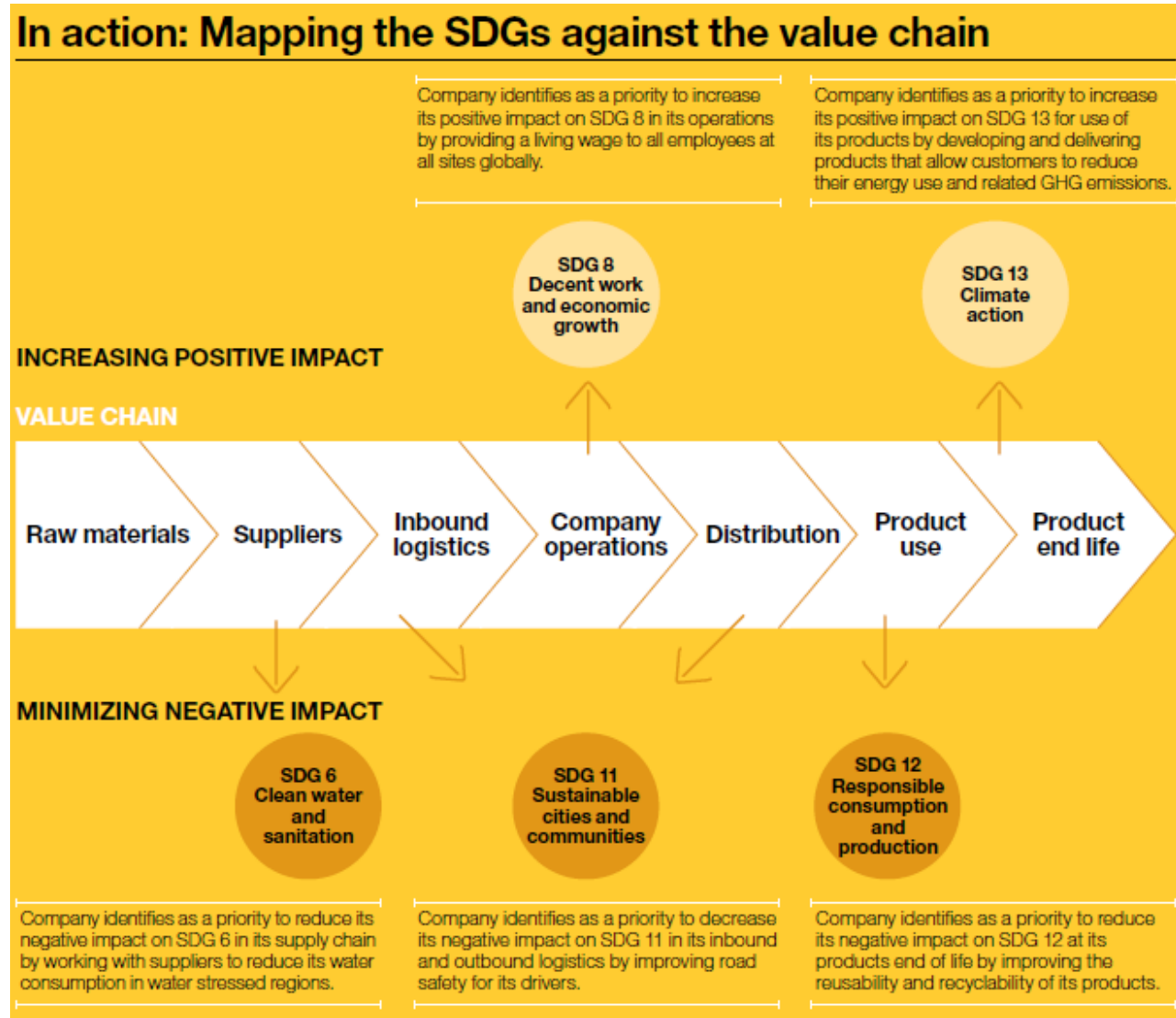


Map the value chain to identify impact areas



How can this be applied to an HEI?

Activity: In groups, consider the relevance/application of this model to an HEI.



Map the value chain to identify impact areas



Raw materials



Students?

Suppliers



Academics

Inbound logistics



Procurement

Company operations



Facilities/estates/services

Distribution



Teaching/RKE/PE/etc.

Product use



Graduates in work

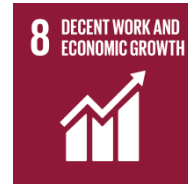
Product end of life



??Retirement??



The VALUE chain



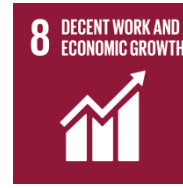
In action: Mapping the SDGs against the value chain



ADDED
VALUE?

IMPACT?

What could an HEI contribute towards meeting the SDGs?

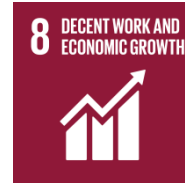


- Estate management
- Operations
- Education
- Research and knowledge creation
- Influencing others
- Raison d'être for HE?



Activity: In pairs discuss the potential contribution of HE to achieving the SDGs via these activities.

Assessing UWE's contribution to achieving the SDGs



Defining priorities

- **Strategy 2020**
- **Sustainability Plan**
- **ISO 14001**

Setting goals

- **Risk register**
- **Sustainability Plan**
- **Strategy 2020**

Integrating

- **Own goal setting**
- **Internal and external presentations**
- **Roles and responsibilities**
- **Terms of reference and reporting templates**
- **Graduate attributes**

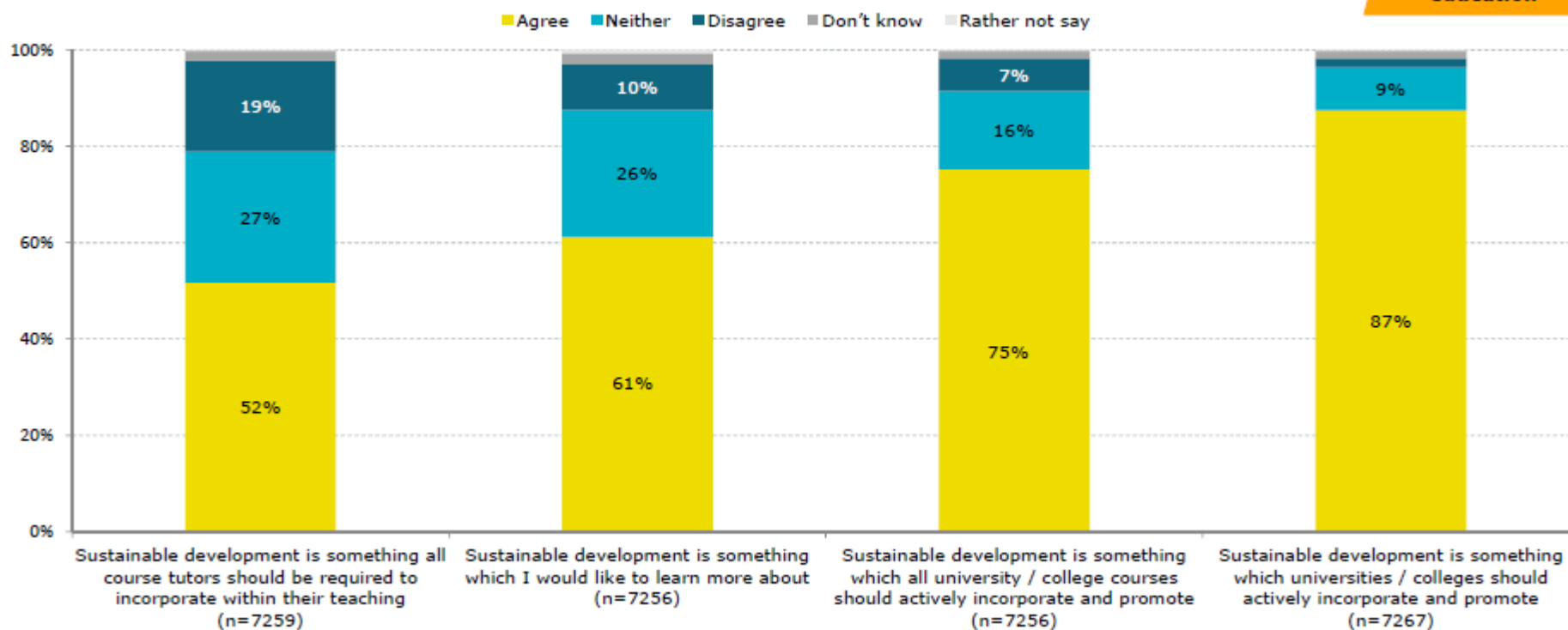
Reporting and communicating

- **Working with others**
- **Internal and external reporting**
- **Standards**
- **Sharing and listening**

Expectations of current and future students



Do students expect universities / colleges to take action on sustainability?



SDGs at UWE

8 DECENT WORK AND ECONOMIC GROWTH 	9 INDUSTRY, INNOVATION AND INFRASTRUCTURE 	17 PARTNERSHIPS FOR THE GOALS 
---	---	---



 21st ANNUAL CONFERENCE
 28-30 MARCH 2017
 GLOBAL GOALS:
 LOCAL ACTION
HOSTED BY


1 NO POVERTY 	2 ZERO HUNGER 			3 GOOD HEALTH AND WELL-BEING 	4 QUALITY EDUCATION 	
5 GENDER EQUALITY 	6 CLEAN WATER AND SANITATION 	7 AFFORDABLE AND CLEAN ENERGY 	UWE Bristol University of the West of England	8 DECENT WORK AND ECONOMIC GROWTH 	9 INDUSTRY, INNOVATION AND INFRASTRUCTURE 	10 REDUCED INEQUALITIES 
11 SUSTAINABLE CITIES AND COMMUNITIES 	12 RESPONSIBLE CONSUMPTION AND PRODUCTION 	13 CLIMATE ACTION 	14 LIFE BELOW WATER 	15 LIFE ON LAND 	16 PEACE AND JUSTICE STRONG INSTITUTIONS 	17 PARTNERSHIPS FOR THE GOALS 

SDGs and Curriculum

8 DECENT WORK AND ECONOMIC GROWTH

9 INDUSTRY, INNOVATION AND INFRASTRUCTURE

17 PARTNERSHIPS FOR THE GOALS

21st ANNUAL CONFERENCE
 28-30 MARCH 2017
**GLOBAL GOALS:
 LOCAL ACTION!**

HOSTED BY

1 NO POVERTY

- Ensuring access to midwife services & care by the poor
- Models of healthcare toward a more flexible & integrated maternity service
- Holistic assessment of needs: emotional, physical, spiritual, social

2 ZERO HUNGER

- Nutrition for pregnant & lactating women
- Breastfeeding
- Effect of modern agricultural practices on maternal & newborn health
- Government schemes
- Responsive feeding local, seasonal & organic food
- Environmental toxins

Midwifery at UWE and the Sustainable Development Goals

- What UWE teaches
- The issues to be tackled

3 GOOD HEALTH AND WELL-BEING

- Wellbeing
- Mental Health
- Neonatal & maternal health
- Preventable disease
- Maternity & Paternity leave
- Continuity of care
- Natural Birth
- HIV & Hepatitis in mothers

4 QUALITY EDUCATION

- Training of midwives
- Models of education
- Education of families
- Technology & healthcare
- Evidence based practice
- Interdisciplinary
- Inquiry-based learning
- Case based education
- Digital literacy standards

5 GENDER EQUALITY

- Migration
- Understanding role of woman in different cultures
- Respecting individuals
- Models of care/safely of care
- Individual care plans for women
- Learning from service users and carers
- Digital literacy standards
- FGM - Remove genetic mutilation
- Promoting advocacy
- Reflection on Practice

6 CLEAN WATER AND SANITATION

- Breastfeeding
- Preventable disease
- Role of freshwater in lives of women
- Hygiene
- Vaccinations
- Eco Parenting

7 AFFORDABLE AND CLEAN ENERGY

- Low carbon midwifery practice
- Transportation withn practice
- Energy availability for families
- Use of gases in theatre/surgery
- Eco Parenting
- Natural Birth

8 DECENT WORK AND ECONOMIC GROWTH

- Funding for healthcare
- Joined up healthcare system
- Interagency working
- Health implications of unemployment
- Inclusion of midwife care in Aid for Trade Initiatives
- Efficiency in midwife practice
- Differences between consideration of social demographic group

9 INDUSTRY, INNOVATION AND INFRASTRUCTURE

- Healthcare infrastructure
- Scientific research for healthcare
- Use of digital technology
- Overseas Working & Learning experience opportunities
- Communication, transport and healthcare e.g. telemedicine/ telehealth

10 REDUCED INEQUALITIES

- Vulnerability of women
- Disability
- Midwifery care for migrants
- Prison & Travelling community contexts
- Learning & physical disability
- International perspectives
- Reflection on Practice
- Working with vulnerable

11 SUSTAINABLE CITIES AND COMMUNITIES

- Access to healthcare facilities
- Models of healthcare
- Social, medical & biomedical considerations in urban and rural contexts

12 RESPONSIBLE CONSUMPTION AND PRODUCTION

- Sustainability healthcare practice
- Living in harmony with nature
- Procurement of healthcare equipment
- Nappies
- Use of Medical Equipment
- Eco-parenting

13 CLIMATE ACTION

- Resilience
- Transport
- Emergency midwife care in disasters stricken areas
- Health as a core component of human resilience
- Clients to professional and vice versa

14 LIFE BELOW WATER

- Waste reduction
- Healthcare links to marine environments
- Awareness of waste minimisation & waste disposal
- Waste Minimisation in clinical training
- Eco-parenting
- NHS Sustainable development Strategy
- Reflection on Practice

15 LIFE ON LAND

- Waste reduction
- Green Space and health
- Healthcare links to terrestrial environments
- Mental well-being
- Reflection on Practice
- Eco-parenting

16 PEACE AND JUSTICE STRONG INSTITUTIONS


- Holistic assessment
- Community Care
- Healthcare systems
- Family centred care
- Community Care
- Respecting individuals
- Reflection on Practice
- Small group care

17 PARTNERSHIPS FOR THE GOALS

- National health policy
- International health partnerships
- Public/private healthcare provision
- Responsive endorsement of sustainability
- Global learning
- International perspectives
- NHS manager shadowing

SDGs and UWE's Sustainability Plan

8 DECENT WORK AND ECONOMIC GROWTH



9 INDUSTRY, INNOVATION AND INFRASTRUCTURE



17 PARTNERSHIPS FOR THE GOALS



eauc
Lancaster University
21st ANNUAL CONFERENCE
28-30 MARCH 2017
GLOBAL GOALS:
LOCAL ACTION



The contribution of UWE's Sustainability Plan to meeting the UN Sustainable Development Goals

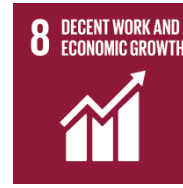
Solutions
Professional practice



UWE Bristol | University of the West of England

<p>1 NO POVERTY</p>  <p>Engagement in the Sustainability Journey Education for Sustainable Development Sustainable Procurement and Ethical Investment</p>	<p>2 ZERO HUNGER</p>  <p>Engagement in the Sustainability Journey Education for Sustainable Development Sustainable Procurement and Ethical Investment Sustainable Food</p>	<h2>The contribution of UWE's Sustainability Plan to meeting the UN Sustainable Development Goals</h2> <p>Solutions <i>Professional practice</i></p>  <p>UWE Bristol University of the West of England</p>		<p>3 GOOD HEALTH AND WELL-BEING</p>  <p>Engagement in the Sustainability Journey Education for Sustainable Development Sustainable Food</p>	<p>4 QUALITY EDUCATION</p>  <p>Engagement in the Sustainability Journey Education for Sustainable Development</p>
<p>5 GENDER EQUALITY</p>  <p>Engagement in the Sustainability Journey Education for Sustainable Development</p>	<p>6 CLEAN WATER AND SANITATION</p>  <p>Education for Sustainable Development Water Management</p>	<p>7 AFFORDABLE AND CLEAN ENERGY</p>  <p>Education for Sustainable Development Energy/Carbon Management</p>	<p>8 DECENT WORK AND ECONOMIC GROWTH</p>  <p>Engagement in the Sustainability Journey Education for Sustainable Development Sustainable Procurement and Ethical Investment Campus Development</p>	<p>9 INDUSTRY, INNOVATION AND INFRASTRUCTURE</p>  <p>Sustainable Procurement and Ethical Investment Campus Development Green IT Smarter Travel</p>	<p>10 REDUCED INEQUALITIES</p>  <p>Education for Sustainable Development</p>
<p>11 SUSTAINABLE CITIES AND COMMUNITIES</p>  <p>Education for Sustainable Development Campus Development Green IT Smarter Travel Climate Adaptation</p>	<p>12 RESPONSIBLE CONSUMPTION AND PRODUCTION</p>  <p>Sustainable Procurement and Ethical Investment Green IT Waste, Emissions & Discharges Smarter Travel Sustainable Food</p>	<p>13 CLIMATE ACTION</p>  <p>Education for Sustainable Development Sustainable Procurement and Ethical Investment Energy/Carbon Management Waste, Emissions & Discharges Campus Development Climate Adaptation</p>	<p>14 LIFE BELOW WATER</p>  <p>Education for Sustainable Development Sustainable Food</p>	<p>15 LIFE ON LAND</p>  <p>Education for Sustainable Development Biodiversity Sustainable Food</p>	<p>16 PEACE AND JUSTICE STRONG INSTITUTIONS</p>  <p>Engagement in the Sustainability Journey Education for Sustainable Development</p>
<p>17 PARTNERSHIPS FOR THE GOALS</p>  <p>Engagement in the Sustainability Journey Education for Sustainable Development</p>					

Assessing, measuring and communicating success



- GRI
- ISO 14001
- Corporate responsibility reporting
- IRIS Metrics
- LiFE
- Responsible Futures
- Awards
- Impact?



nus

**Responsible
Futures**

Accredited institution



What next?



- SDG Roadshow
- Responsibility
- Research
- Impact
- Working with our city and region
- Limits?

HE and session SDGs



Selection of connections:

SDG8

- HEIs as places of work
- HEIs as producers of future employees
- HE as a generator of economic activity

SDG9

- Research is about innovation
- HEIs have access to intelligence, creativity, dedication and enthusiasm

SDG17

- HEIs work within their locations/regions
- HEIs bridge private and public sector
- HEIs and their Students' Unions



Conclusions



Take 1 minute to note:

- One action you will take forward sparked by this session
- one person who you will speak to about SDG work at your institution.

Final questions?

THANK YOU!

