

INFLUENCE!

Inspiration and insight to change
minds and policy

19 - 20
June 2019

University of Manchester



Headline Sponsor



The Alliance for Sustainability
Leadership in Education

Don't forget to follow and tweet us @TheEAUC
Join in the conversation using #Influence2019





Climate Change

Global challenge and

Local influence

Global Influence

THE °CLIMATE GROUP

Local Influence

CUNDALL

WARWICK

University of Warwick – An Overview

INFLUENCE!

Inspiration and insight to change
minds and policy

19 - 20
June 2019
University of Manchester



- ❑ Ranked 7th overall in the UK (The Times, 2017)
- ❑ Four departments ranked as the leading in the country
- ❑ 87% of our research is 'world -leading' or 'internationally excellent'
- ❑ 19 departments in the top 10 in the UK
- ❑ WMG (Warwick Manufacturing Group), WBS – Global MBAs
- ❑ Sciences Park, Conferences
- ❑ One of the largest University campus in Europe
- ❑ 25,615 students, 6,294 academics, researchers and staff



Main Campus

INFLUENCE!

Inspiration and insight to change
minds and policy

19 - 20
June 2019
University of Manchester



“a 24/7, 365 town of 30,000 people”

- ❑ More than 150 buildings covering 560,000m²
- ❑ 7,000 student accommodation rooms
- ❑ 3 conference centres
- ❑ 2 Sport centres
- ❑ Retail, cafes and restaurants
- ❑ Arts Centre
- ❑ Offices & teaching buildings
- ❑ Industrial & research buildings
- ❑ 19km heating/cooling network
- ❑ Self-generate at least 50% of heat and power needs

290 hectares
of Research,
Teaching,
Residential,
Conferences
and Business



215 hectares
of research,
business and
farming



Zero Carbon Targets – not all FE/HE yet

INFLUENCE!

Inspiration and insight to change
minds and policy

19 - 20
June 2019
University of Manchester



- UK signatory of Paris Agreement
 - Need to reduce carbon emissions scope 1, 2, 3 by 80-95% by 2050
- Several universities have adopted ambitious targets but not full scope 3 (procurement)
- Universities face challenging times
- “Do more with less” is Good
 - Reduce use of natural resources

- ✓ -50% CO₂/£ income by 2025
 - ✓ Net zero carbon university by 2040.
- * Scope 1 + 2 + partial scope 3



- ✓ -43% CO₂ by 2020
- ✓ Carbon free by 2025.

* Scope 1 + 2 + partial scope 3

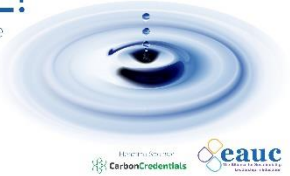


Climate Group Work

INFLUENCE!

Inspiration and insight to change
minds and policy

19 - 20
June 2019
University of Manchester



THE °CLIMATE GROUP

OUR WORK ▾

NEWS & BRIEFINGS

ABOUT ▾

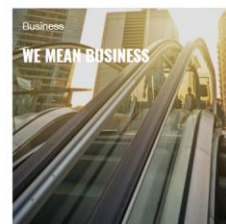
CONTACT US ▾

SUPPORT US

Home



THE CLIMATE GROUP WORKS TO ACCELERATE CLIMATE ACTION. WE ACT AS A CATALYST TO TAKE INNOVATION AND SOLUTIONS TO SCALE, BY BRINGING TOGETHER POWERFUL NETWORKS OF **BUSINESSES AND **GOVERNMENTS** THAT SHIFT GLOBAL MARKETS AND POLICIES.**



Climate Group Work

INFLUENCE!

Inspiration and insight to change
minds and policy

19 - 20
June 2019

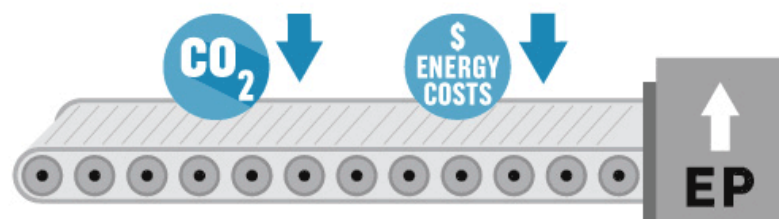
University of Manchester



WHAT IS ENERGY PRODUCTIVITY?

IT'S ABOUT MAXIMIZING EACH UNIT OF
ENERGY FOR GREATER ECONOMIC OUTPUT
– OR DOING MORE, WITH LESS.

BUSINESSES CAN IMPROVE ENERGY PRODUCTIVITY BY
INVESTING IN ENERGY EFFICIENT TECHNOLOGIES AND
PRACTICES TO REDUCE EMISSIONS AND COSTS...



FOR EXAMPLE

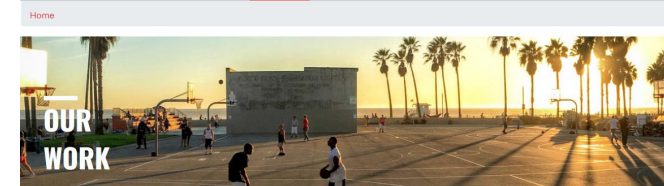
IF COMPANIES
GLOBALLY MADE THE
SWITCH* TO LED LIGHT
BULBS, THEY WOULD
SAVE AROUND:

EP 100

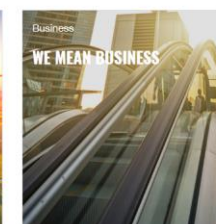
BROUGHT TO YOU BY THE °CLIMATE GROUP

THE °CLIMATE GROUP

OUR WORK NEWS & BRIEFINGS ABOUT CONTACT US SUPPORT US



THE CLIMATE GROUP WORKS TO ACCELERATE CLIMATE ACTION. WE
ACT AS A CATALYST TO TAKE INNOVATION AND SOLUTIONS TO SCALE,
BY BRINGING TOGETHER POWERFUL NETWORKS OF **BUSINESSES** AND
GOVERNMENTS THAT SHIFT GLOBAL MARKETS AND POLICIES.



45 - EP100 Members

INFLUENCE!

Inspiration and insight to change
minds and policy

19 - 20
June 2019
University of Manchester



Landsec

Joined December 2016 (one of the first & RE100 member)
UK's largest property developer
Double its energy productivity by 2034 compared to 2014
13% energy consumption reduction in 3 years



45 - EP100 Members

INFLUENCE!

Inspiration and insight to change
minds and policy

19 - 20
June 2019
University of Manchester



Joined September 2018

First carbon positive homebuilder

Net Zero Carbon Buildings pathway

Committing to **owning, occupying** and **developing** only assets
that are net zero carbon by 2030.



45 - EP100 Members

INFLUENCE!

Inspiration and insight to change
minds and policy

19 - 20
June 2019
University of Manchester



Foster + Partners

Joined May 2019

Sustainable architecture, urbanism, and design

Net Zero Carbon Buildings pathway

Committing to **occupying** assets that are net zero carbon by 2030.



45 - EP100 Members

INFLUENCE!

Inspiration and insight to change
minds and policy

19 - 20
June 2019
University of Manchester



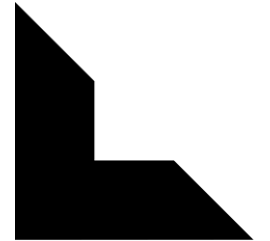
Joined September 2018

Multi-disciplinary consultancy for the built environment.

One Planet Company by BioRegional in 2012

Committing to **occupying** assets that are net zero carbon by 2025

Foster + Partners



Landsec



EP100 Member (UK)

INFLUENCE!

Inspiration and insight to change
minds and policy

19 - 20
June 2019
University of Manchester



CUNDALL

News

**Cundall a founding signatory
for momentous Net Zero
Carbon Buildings
Commitment**

Knowledge hub

**Cundall's Annual
Sustainability Reports**

Knowledge hub

**Sustainable Strategy and
Governance**

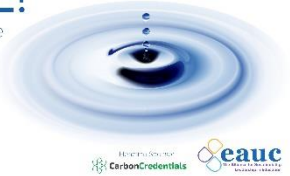
EP100 Member (UK)

INFLUENCE!

Inspiration and insight to change
minds and policy

19 - 20
June 2019

University of Manchester



CUNDALL

News

Cundall a founding signatory for momentous Net Zero Carbon Buildings Commitment

Knowledge hub

Cundall's Annual Sustainability Reports

Betteshanger Visitor Centre

INFLUENCE!

Inspiration and insight to change
minds and policy

19 - 20
June 2019

University of Manchester



Betteshanger Visitor Centre

Deal, UK

Starting from Passivhaus design principles, the building has optimised glazing orientation and sizes to take advantage of beneficial solar gain in winter while using solar shading devices to limit gain in summer. The majority of the spaces are naturally ventilated utilising the excellent local air quality. The only mechanically ventilated spaces are the changing areas, toilets, kitchen and museum areas where the heat from the exhaust air will be recovered.

© Studio Evans Lane



CUNDALL

Zero Carbon Energy

Making buildings and infrastructure energy efficient and supplying all energy from renewables.



Health and Wellb

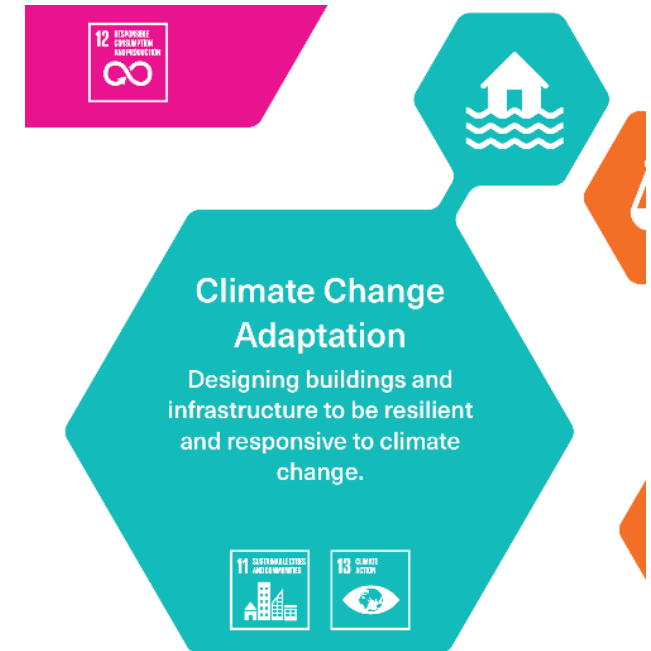
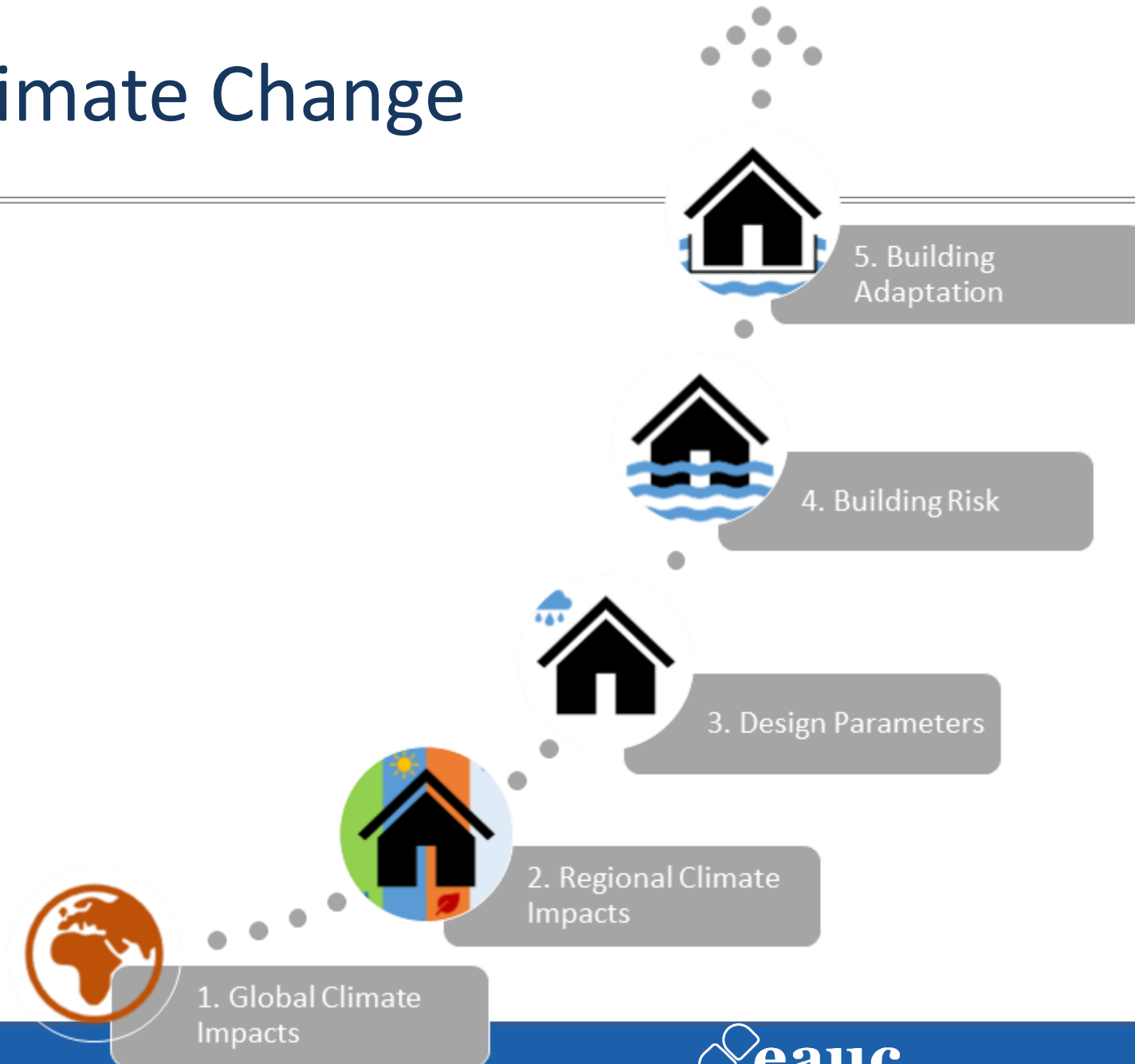
Climate Change

INFLUENCE!

Inspiration and insight to change
minds and policy

19 - 20
June 2019

University of Manchester



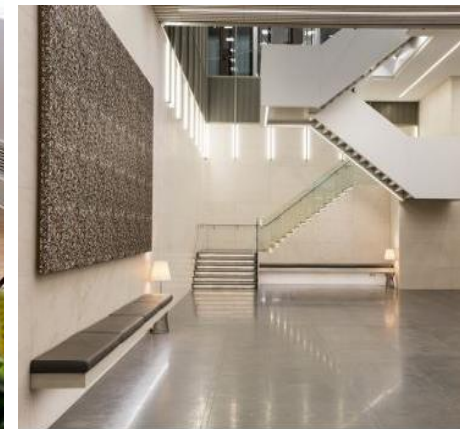
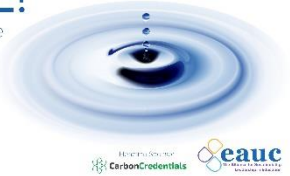
Crown Estates HQ – 1st WELL Platinum

INFLUENCE!

Inspiration and insight to change
minds and policy

19 - 20
June 2019

University of Manchester

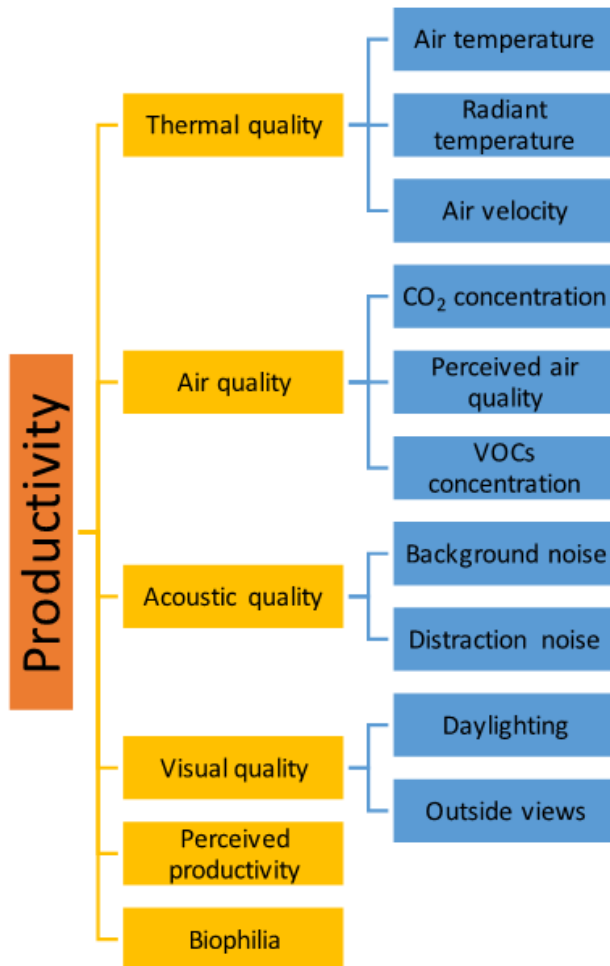
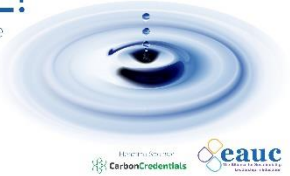


Crown Estates HQ – 1st WELL Platinum

INFLUENCE!

Inspiration and insight to change
minds and policy

19 - 20
June 2019
University of Manchester



Predicted views and daylighting productivity loss

FE-HE sector Buying Power

INFLUENCE!

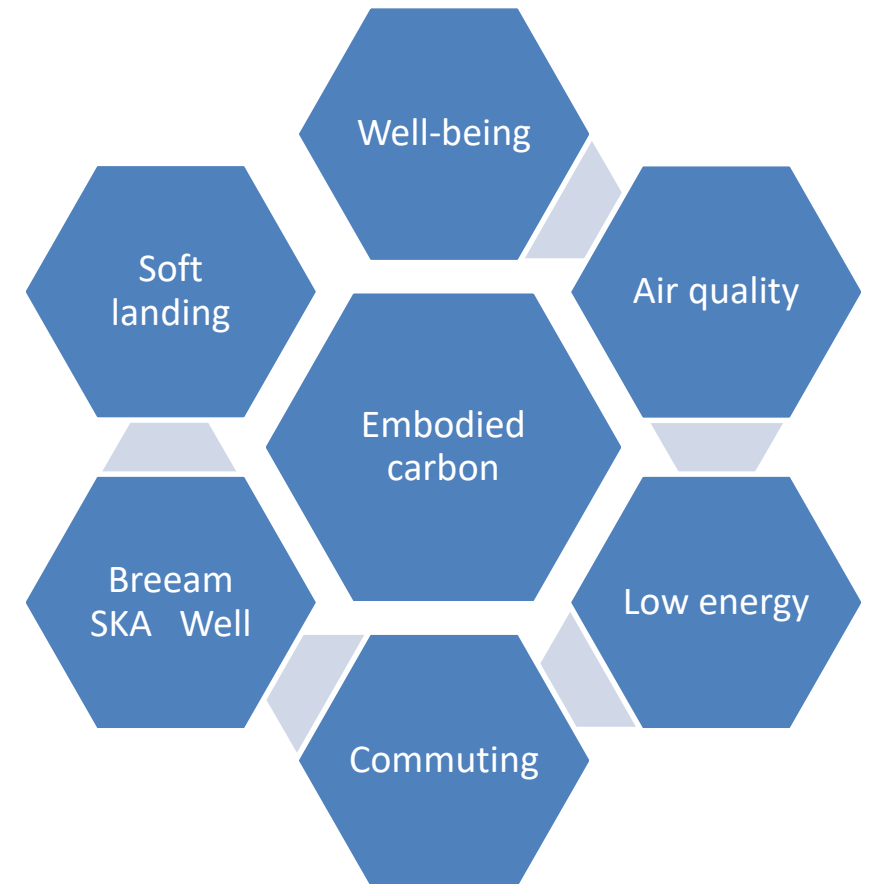
Inspiration and insight to change
minds and policy

19 - 20
June 2019
University of Manchester



- £2-3bn capital expenditure per year
- Society mind-set is shifting
- Public sector lead by example

**Opportunity
to influence
Students,
staff &
Supply chain**



Building A Sustainable Future Conference

INFLUENCE!

Inspiration and insight to change
minds and policy

19 - 20
June 2019
University of Manchester



- Director of Estates & Executives
- Forum to share best practices
- Explore challenges of ambitious construction programmes, sustainable development and cost pressures.
- Inspire decision makers to influence future operation and capital expenditure.



HE Conference @ Warwick

Building A Sustainable Future Conference

INFLUENCE!

Inspiration and insight to change minds and policy

19 - 20
June 2019
University of Manchester



Awareness

- ✓ IPCC report, Need for resilience
- ✓ UK Climate Change Act + Paris Climate Change

Building Trust

- ✓ C40 - International cities and organisations commitment,
- ✓ The Climate Group, NGOs including EAUC, WWF, Greenpeace...

The business case stacks-up

- ✓ UK Industrial strategy – Construction sector deal
- ✓ Building standards - Passivhaus Trust, WELL, BREEAM 2018...
- ✓ UK/World Green Building Council – Advancing net zero campaign
- ✓ Building performance and Soft landing
- ✓ AUDE/EAUC Sustainability scorecard

Critical mass

- ✓ Construction companies case study and vision,
- ✓ Universities campuses showcase
- ✓ Greater London Authority
- ✓ Greater Manchester



Monday 11th & Tuesday 12th November 2019

Warwick Conferences – The Slate, University of Warwick, Coventry

The SDG Accord

INFLUENCE!

Inspiration and insight to change
minds and policy

19 - 20
June 2019
University of Manchester



Headline Sponsor



End extreme poverty, inequality and climate change
www.sdgaccord.org

Joel Cardinal - University of Warwick - J.Cardinal@warwick.ac.uk
Paul Chatwin – Cundall - p.chatwin@Cundall.com



Don't forget to follow and tweet us @TheEAUC
Join in the conversation using #Influence2019