



d+b facades
OVERCLADDING SPECIALISTS

Imperial College London, ACEX Building

PROJECT SCOPE

The project comprised aluminium rainscreen overcladding and high-performance replacement windows undertaken in two phases to co-ordinate with Imperial College London's other project activities.

In addition to programming issues, a number of delivery challenges had to be overcome as the site location was restricted with limited access and working space. This necessitated the use of cradles from the roof as a principal means of access. The adjacent low-level, curved 'hypersonics' roof was fragile and had to be bridged by scaffolding. The site is located on a busy city-centre campus with lack of storage space, consequently deliveries had to be very carefully scheduled. These challenges were further complicated by the approaching London Olympics which meant lorry movements were also restricted. Despite all these constraints, the project was delivered on time, within budget and with minimal disruption.

REFERENCE CONTACT

Rob Pask Senior Project Manager
Imperial College London
Level 5, Sherfield Building,
South Kensington Campus, London SW7 2AZ
T: 0207 5948924 M: 07725 159899

TYPE OF CONTRACT Design and Build JCT

CONTRACT VALUE £1.1m

PROJECT DURATION

Jan 2012 to Mar 2013 in two phases

Client Testimonial

The visual appearance and the improvements for the building users both in terms of thermal integrity and sound are a great achievement. D+b facades delivered the project in 2 phases being co-ordinated with other projects and with three internal departments remaining in occupation. We are all delighted with the end result and the managed-client-facing approach.

Rob Pask

Senior Project Manager

ACEX Building prior to refurbishment



PHASE 1



before



after

PHASE 2



before



after

PHASE 2

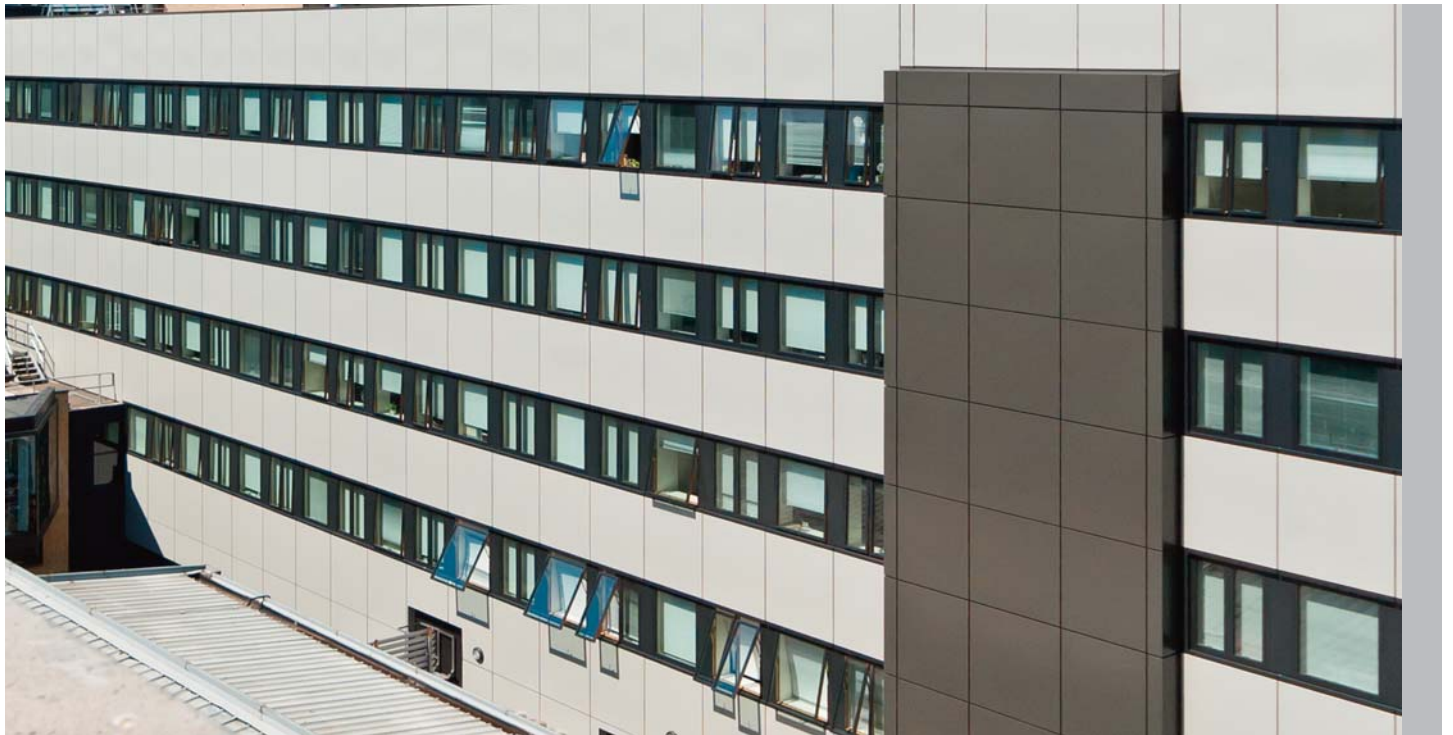
before



after

COMPLETED PROJECT

Phase 1



Phase 2



Panorama of refurbished building

