



Estates and Operations



18th EAUC
**Annual
Conference**
7-9 May 2014



NOTTINGHAM
TRENT UNIVERSITY





7-9 May 2014

LUCIDEON

NOTTINGHAM
TRENT UNIVERSITY





You Can't See It? Now You Can!

- Why infographics?
- Examples
- Create your own
- Result and discussion



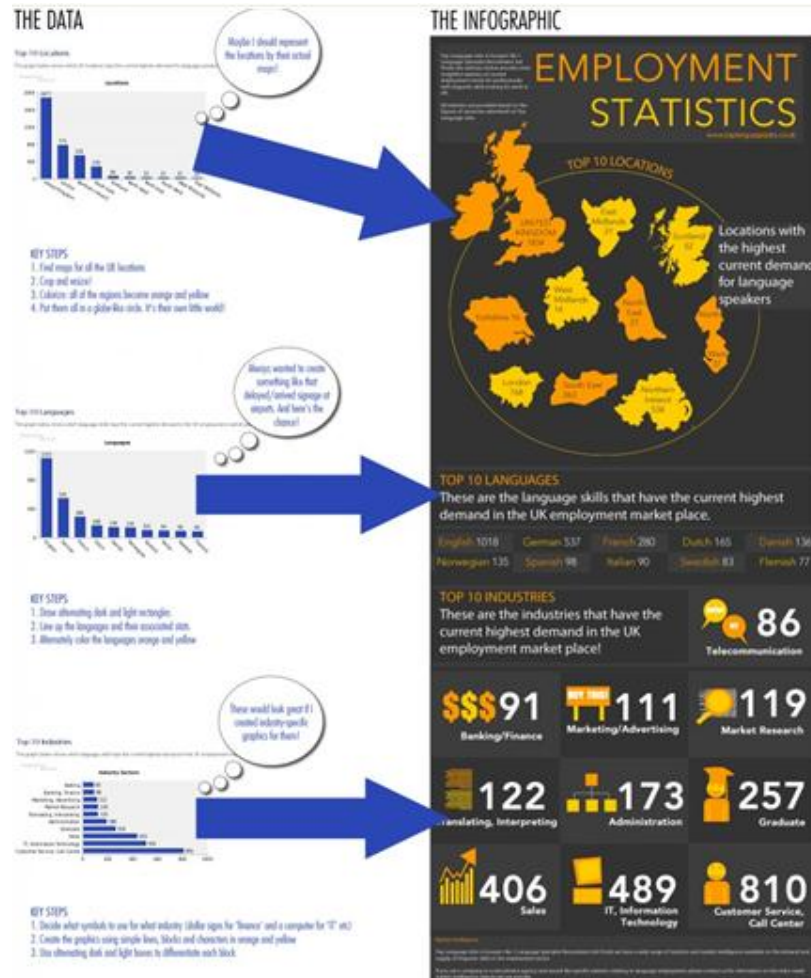


You Can't See It? Now You Can! – Why Infographics?





You Can't See It? Now You Can! – Examples





You Can't See It? Now You Can! – Examples

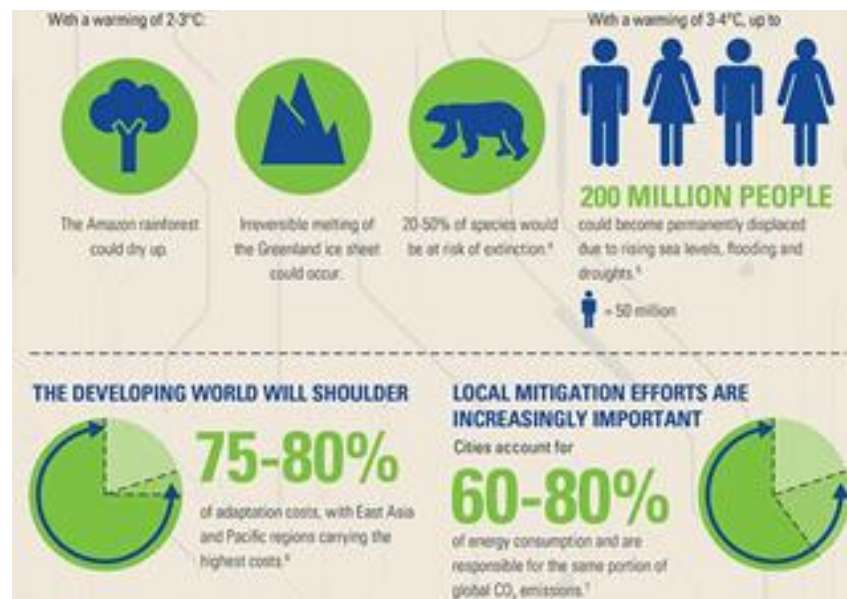
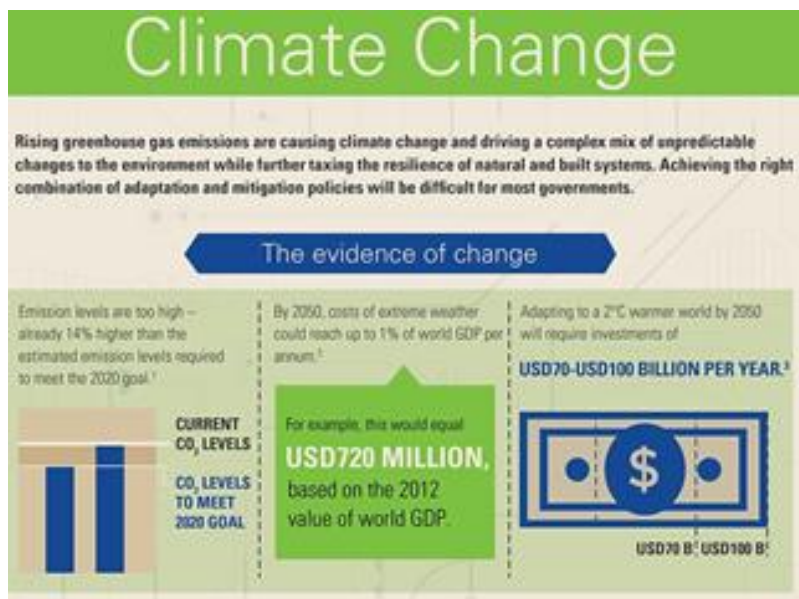


How to Increase supply and Decrease emissions? Efficiency counts triple!





You Can't See It? Now You Can! – Examples





You Can't See It? Now You Can! – Examples

THE RISE OF FLEXIBLE WORKING

Increased connectivity and a desire for a more productive workforce has resulted in many businesses allowing their employees to work remotely. But exactly how widespread is the practice and what impact does it have on those who work under it?

Q. Thinking about your current job...
Do you work remotely as often as you would like to?

76%

of office workers don't work remotely as often as they'd like



Q. Which of these statements on flexible working do you agree with?



38%

All employees should be given the option to do their work from home, it's beneficial for all parties

19%

The majority of people who work from home take advantage and slack off

16%

I would work from home more often but there is a stigma attached to it, people often think it means you do less work

27%

Working from home too often is bad for business, it erodes working relationships & team spirit

14% none of these
12% Don't know

Q. How often do you work remotely?



42%

of office workers never work remotely

7%

of office workers work remotely very often

Q. One day offices will be a thing of the past



42%

agree or strongly agree

41%

disagree or strongly disagree

Q. If offices are on their way out, when will it happen?



40%

Within the next ten years

82%

Within the next twenty years

96%

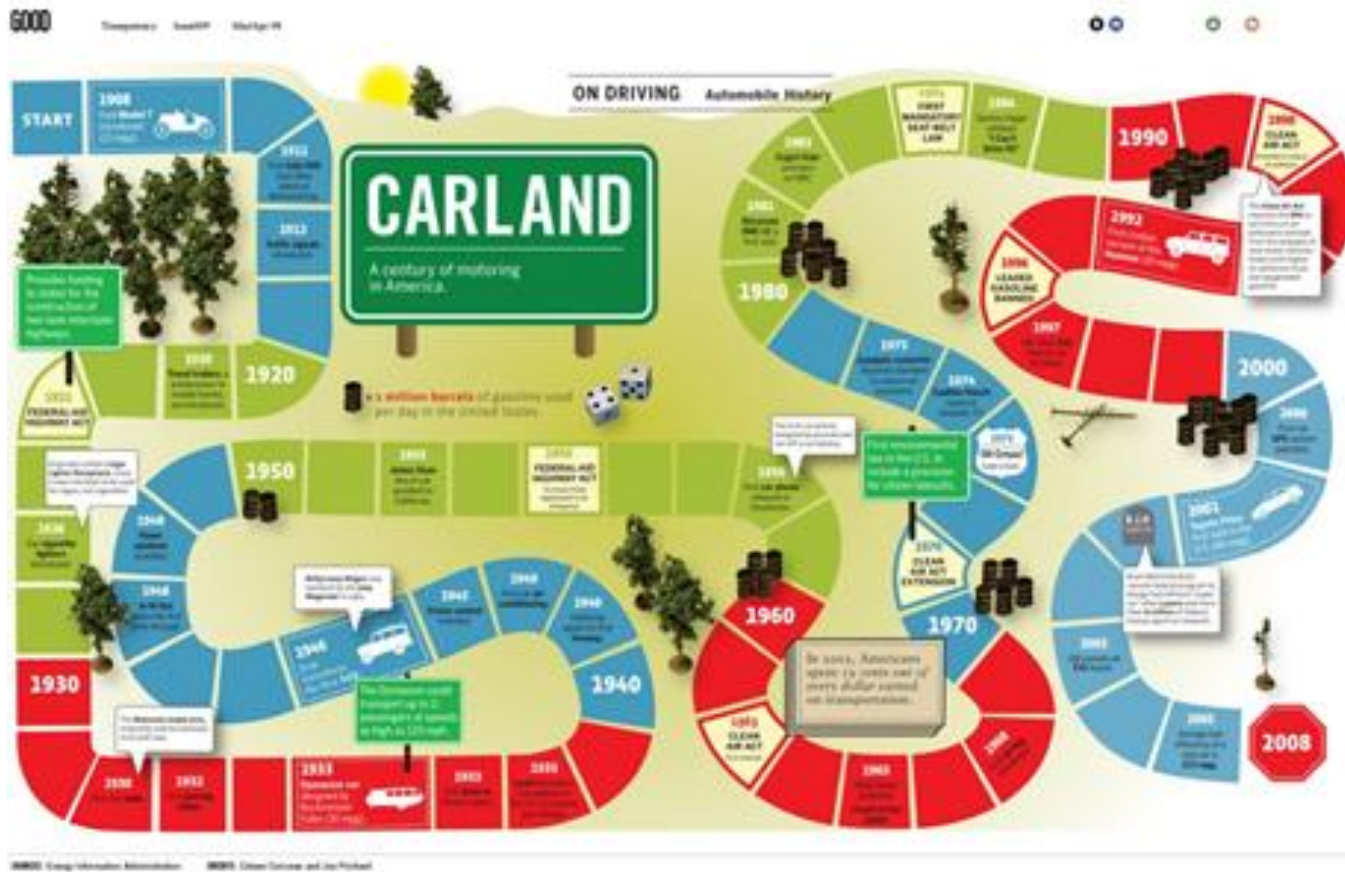
Certainly in the future

All figures, unless otherwise stated, are from YouGov Plc. Total sample size was 2,049 adults of which 726 were office workers. Fieldwork was undertaken between 28th - 29th January 2014.





You Can't See It? Now You Can! – Examples





You Can't See It? Now You Can! – Create Your Own

Get creating your infographic:

- Choose your sustainability topic
- Message
- Visual image
- Who
- Facts and figures





You Can't See It? Now You Can! – Result and Discussion

Show created infographic with brief explanation of:

- Why this sustainability topic is important to your campus?
- What message do you want to get across?
- How does your infographic help?

Aha moment





18th EAUC
Annual Conference
7-9 May 2014

You Can't See It?
Now You Can!

LUCIDEON

ann-marie.cornall@lucideon.com



NOTTINGHAM
TRENT UNIVERSITY

