



HESCET Tool 3.4



# Background

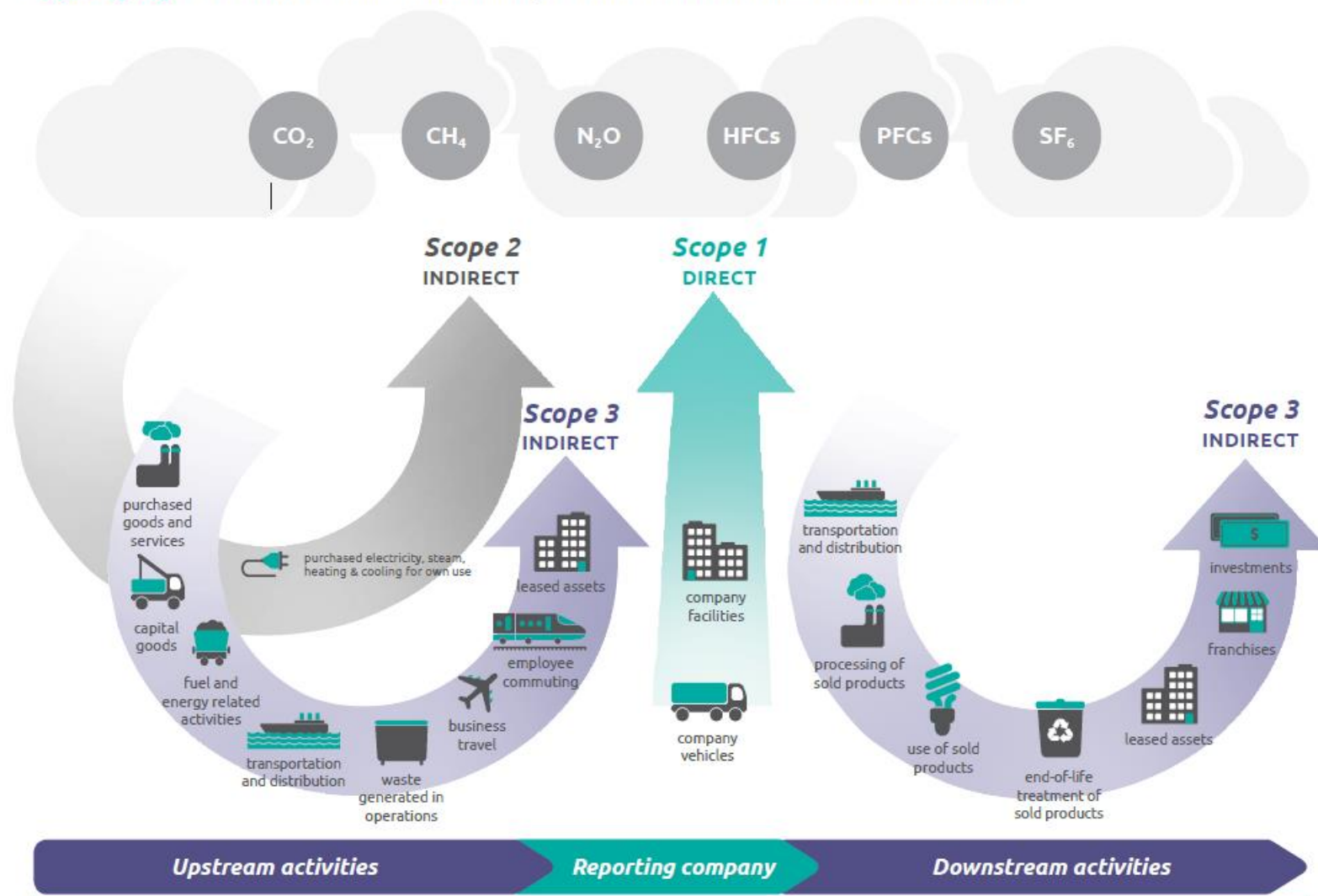
- Higher Education Supply Chain Emissions Tool (HESCET)
- Use of DEFRA categories
- Simple form of calculating Scope 3 emissions based on institutional non-pay spend (ProcHE)
- Tool used for EMR (Estate Management Report) returns with a breakdown into HESA categories
- Public Bodies Climate Change Duties (PBCCD) reporting

# HESA categories

- E3SCBS - Business services
- E3SCICT - ICT
- E3SCMP - Other manufactured products
- E3SCFC - Food and catering
- E3SCMPI - Medical and precision instruments
- E3SCWW - Waste and water
- E3SCOTH - Other procurement
- E3SCPP - Paper products
- E3SCUNC - Unclassified
- E3SCCON - Construction
- E3SCMFCG - Manufactured fuels, chemicals, and gases

# Scopes

Figure [5.2] Overview of GHG Protocol scopes and emissions across the value chain



# Review of the HESCET tool

- UK Working Group
- DEFRA conversion factors used had not been updated since 2009
- Changes taken into account:
  - materials,
  - methods of production
  - and in some cases logistical methods of delivery
  - Distinguishing into more geographical zones (previously UK / EU / Rest of World)
- 2009: 75 categories ; Now: 311.
- Further information regarding year-on-year changes to conversion factors is available [here](#).

# Accessing the Tool

Institutions that are HEPA members can download a copy of the updated HESCET tool [here](#).

EAUC Members can download a copy of the updated HESCET tool [here](#).

# APUC Scope 3 Emissions Report



Overview report shows a breakdown of carbon emissions per procurement category



Further breakdown by supplier



Available for institutions who provided non pay spend via Contract Uptake Website



Access via Contract Uptake Website – Reports – Scope 3 Emissions Report



Row Labels	2017/18	2018/19	2019/20	Grand Total
[-] Estates	7925.80	7828.72	6241.43	21995.94
+ Utilities	4367.43	4420.64	4348.54	13136.61
+ Travel & Transport (incl. Vehicle hire & Subsistence)	987.59	1263.87	508.99	2760.45
+ Estates & Buildings	1281.34	862.73	577.81	2721.88
[-] Catering Supplies & Services	658.15	485.84	233.94	1377.93
+ Meat, Poultry, Offal	321.61	224.92	81.31	627.84
+ Catering and Bar Equipment Maintenance and Repair	121.00	145.28	137.68	403.96
+ Groceries	130.67	69.10	2.51	202.27
+ Vending Equipment, Consumables and Charges	22.68	11.85	0.74	35.27
+ Non-alcoholic Drinks	17.51	8.48		25.98
+ Dairy Produce	15.39	7.88	1.37	24.65
+ Fresh Fruit and Vegetables	9.32	7.31	3.54	20.17
+ Tableware, Crockery, Cutlery, Table Coverings etc inc Disposables	6.74	2.07	3.17	11.98
+ Confectionery	4.02	2.72	2.90	9.64
+ Catering Hospitality	4.25	2.36	0.21	6.83
+ Bakery Products	2.51	1.28		3.79
+ Alcoholic drinks	0.93	1.56		2.49
+ Fish and Seafood	1.02	0.62	0.25	1.89
+ Other/General Catering	0.50	0.42	0.25	1.17
+ Furniture, Furnishings & textiles	165.36	294.11	178.32	637.80
+ Facilities Operations	178.55	168.11	153.09	499.74
+ Health & Safety & Security	139.41	164.11	90.67	394.20
+ Workshop & Maintenance Supplies (including Engineering)	75.22	90.16	91.27	256.64
+ Janitorial & Domestic Supplies & Services	37.79	49.93	28.12	115.83
+ Vehicles, Fleet Management (Purchase, Lease, Contract Hire)	25.26	19.21	20.04	64.52
+ Telecommunications	9.69	10.00	10.65	30.34
[-] Information Services	1905.47	1493.94	1485.28	4884.69
[-] Laboratories	61.97	67.31	138.40	267.67
[-] Non Influencable	54.12	60.76	115.24	230.12
[-] Professional Service - General	560.13	879.17	532.27	1971.57



# Caveats

Updated codes will have an impact on previous report results

Higher Spend = higher emissions due to lack of breakdown

Impact of supplier coding against correct ProcHE in finance systems

General shift from industrial to domestic focus within the DEFRA factors

Mapping ProcHE to DEFRA not always 1:1

HESA categories not specific to HEFE sector