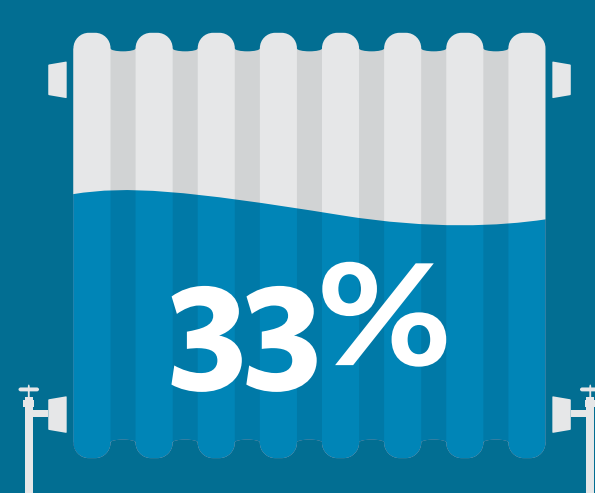


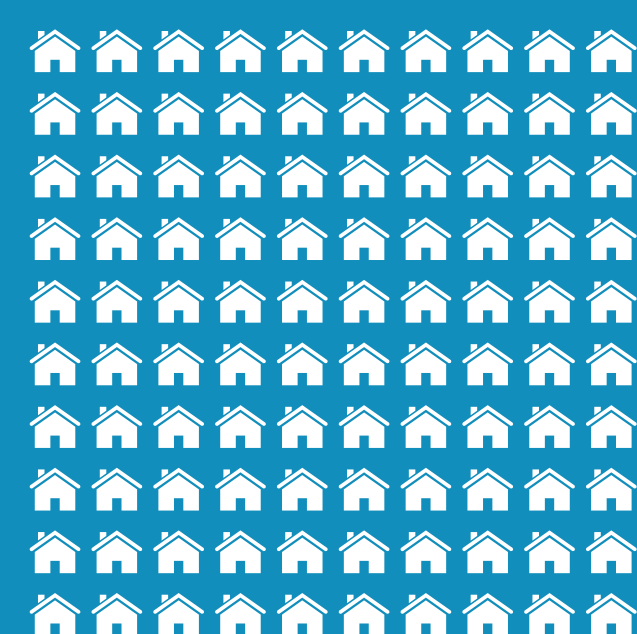
Our combined heat and power plant
(CHP) on the Highfield Campus
is a mechanical marvel
saving 5450 tonnes
of carbon per year.



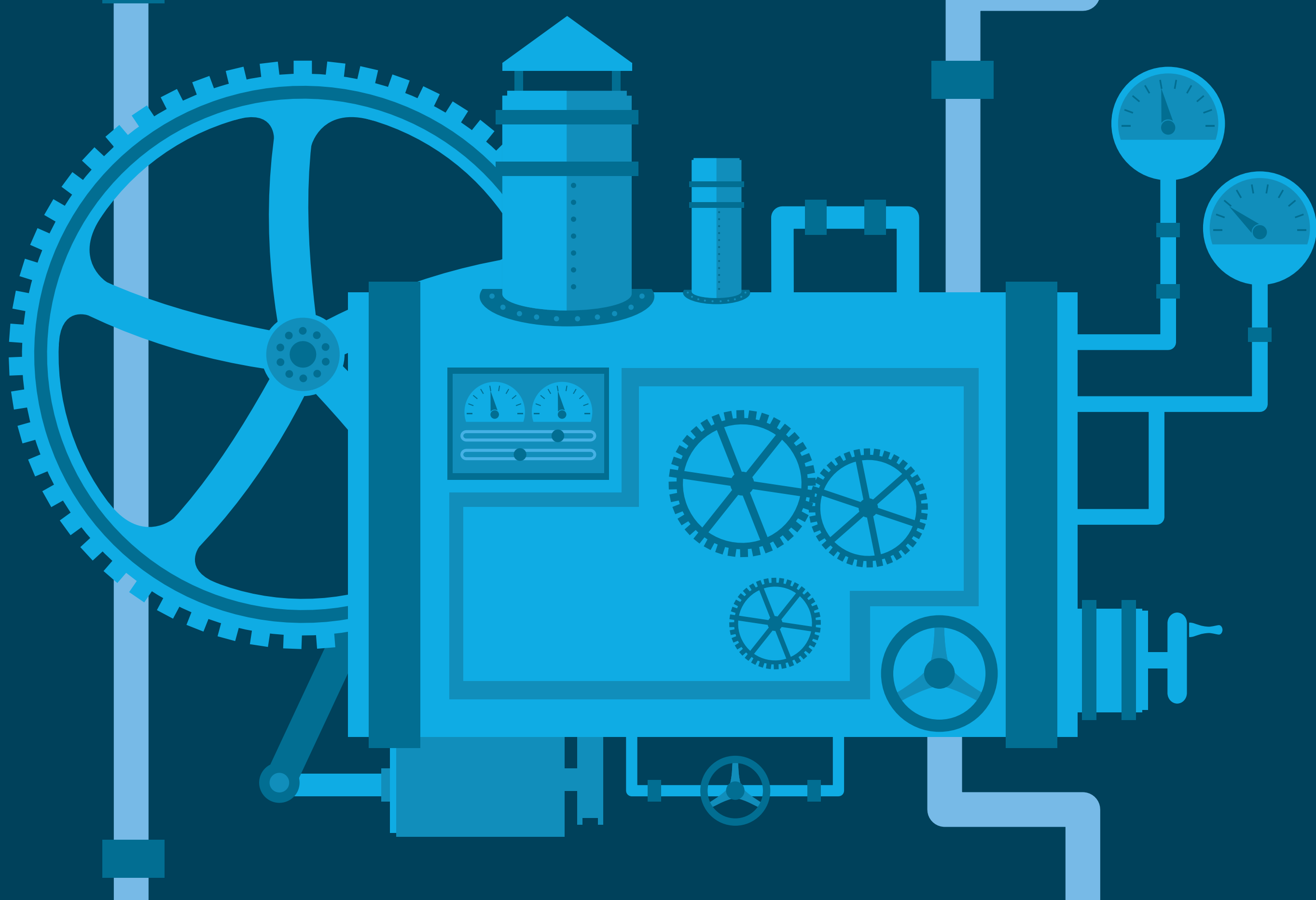
This innovative gas powered generator produces 25 per cent of the University's electricity. The heat produced is captured and distributed around the campus.



This heat is equivalent to 360 home boilers – providing 33 per cent of our heating and hot water on campus, plus keeping the swimming pool warm.



The plant reduced our carbon emissions by 5,450 tonnes in 2013 alone – the equivalent of more than 1,000 households.



The equivalent carbon saving is as much as everybody at the university filling a total of 42 million balloons with carbon dioxide.



The CHP was a £3.5m investment by the University, and it saves £560,000 in energy costs each year.



We do some big things, but the little things add up too. Turning off lights, shutting down computers, closing windows will save carbon and money.

www.southampton.ac.uk/sustainability



@Sustainable_UoS