



Scoping Report

Project	
Prepared by	
Date	
Version	1.0

Findings and Recommendations

- 96% (1231) of staff have access to public transport options
 - Promote and advertise this
- 74% (948) of staff could cycle to work (live within 12.5 miles)
 - Run a campaign around cycle to work week
 - Promote a cycle to work scheme if possible
- 11% (135) of staff live close enough to walk (live within 3 miles)
 - See map
- 4% (48) staff members already have a Liftshare match
 - These are matches from within your organisation
- 99% (1266) of staff have a sustainable travel option
 - Giving staff options helps to encourage change
- 89% (1140) of staff have 2 sustainable travel options
 - More options mean more chance of change
- 10% (126) of staff have 3 sustainable travel options
 - More options mean more chance of change
- Park and Ride is unavailable
 - 0 results being produced for P&R

Liftshare

Whilst we appreciate that the focus of this report is not car sharing, you can see that there are high density areas of employee home locations where this could be a further option. For employee's living further afield who are likely to have less public transport options the promotion of car sharing could be incredibly beneficial.

Workings

- 1284 postcodes provided
- 1284 postcode converted
- Set arrival time: 08:45
- Set destination:

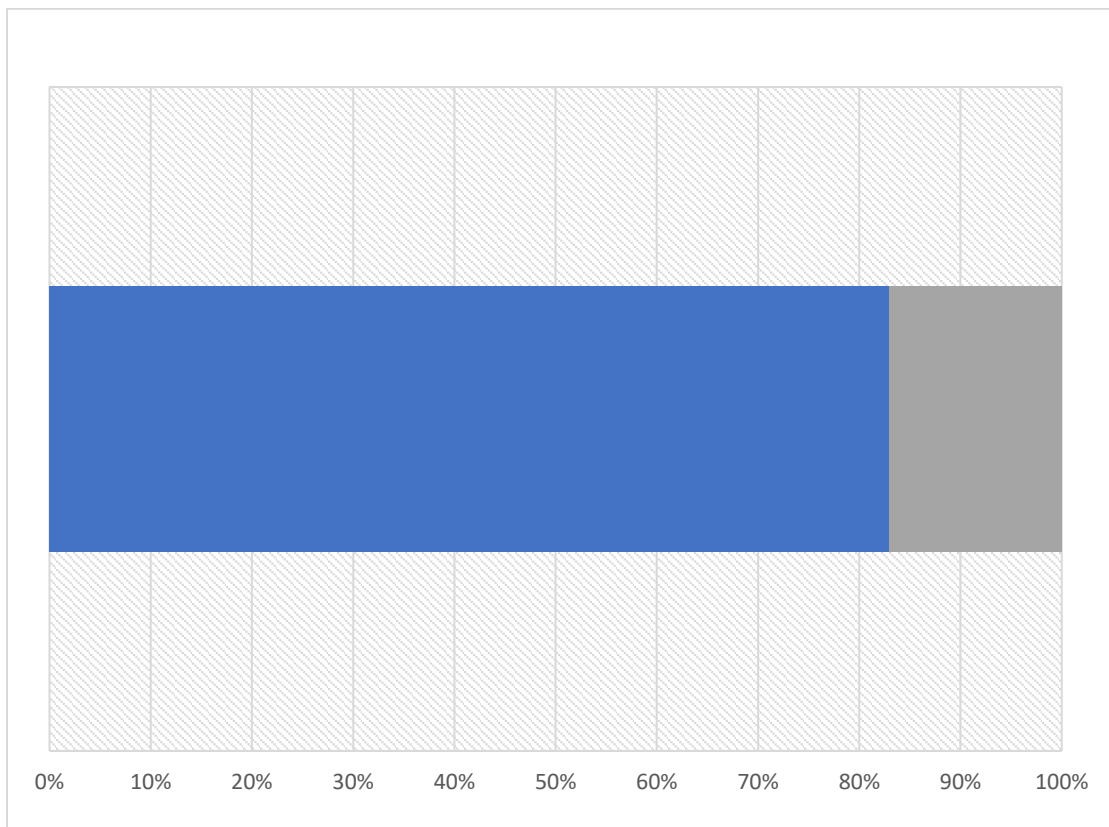
Calculation settings

- Walking journeys limited to 3 miles max
- Cycling journeys limited to 12.5 miles max
- PT journeys capped at 4 times the driving time
- All PT journeys will meet the arrival time (08:45)
- Liftshare results capped at half hour window either side
- Liftshare results taken from employees within 1 mile

Sustainable Travel Options

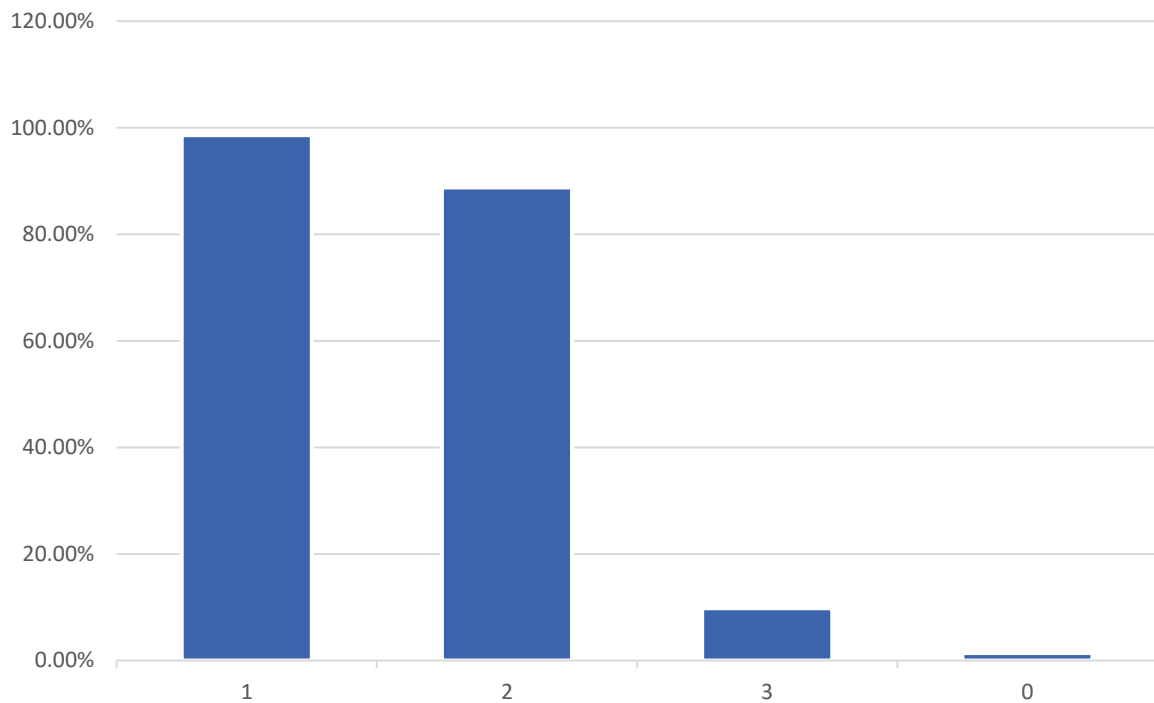
All travel options	% of staff	# of staff
Public Transport	95.87%	1231
Cycling	73.83%	948
Walking	10.51%	135
Liftshare	3.74%	48
Park and Ride	0.00%	0
Cycle + Train	0.00%	0
Drive + Train	0.00%	0

Proportion of employees with a sustainable travel option



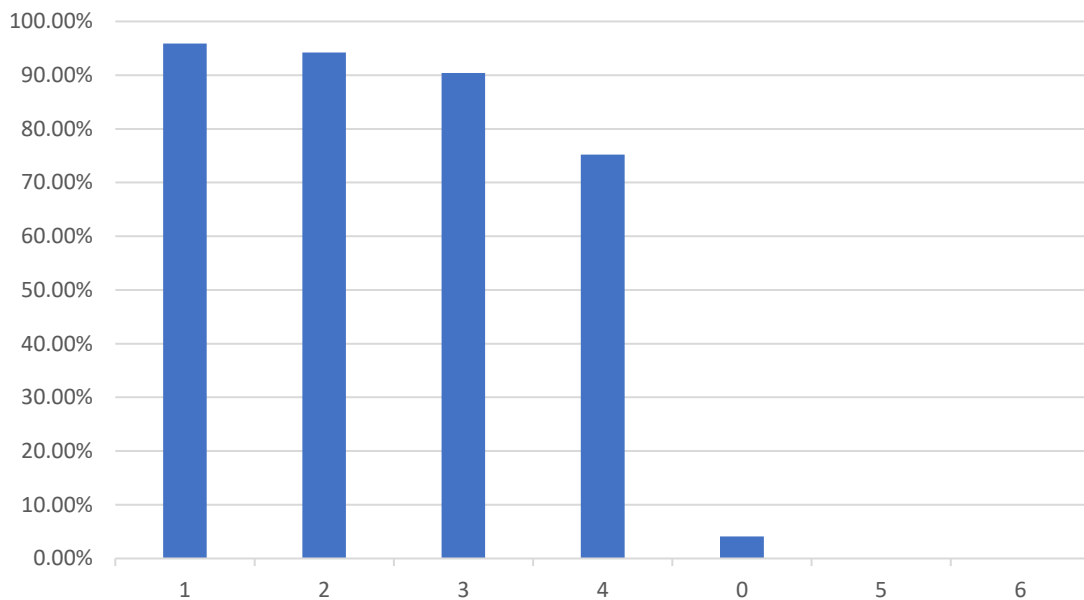
Sustainable travel options	# of staff	% of staff
1	1266	98.60%
2	1140	88.79%
3	126	9.81%
0	18	1.40%

Number of Sustainable Travel Options Available



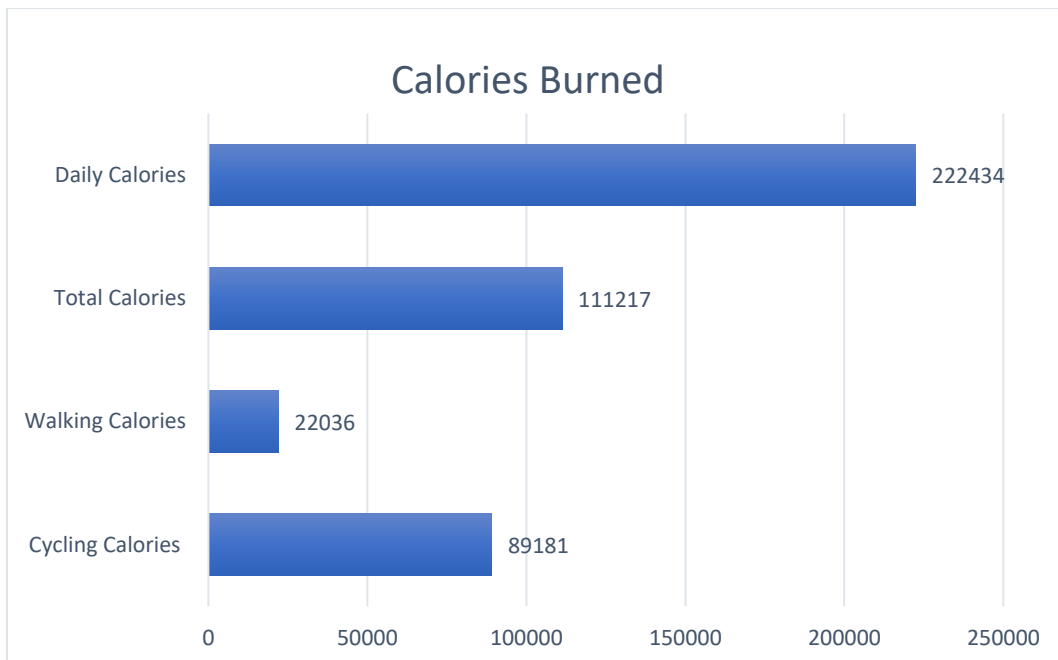
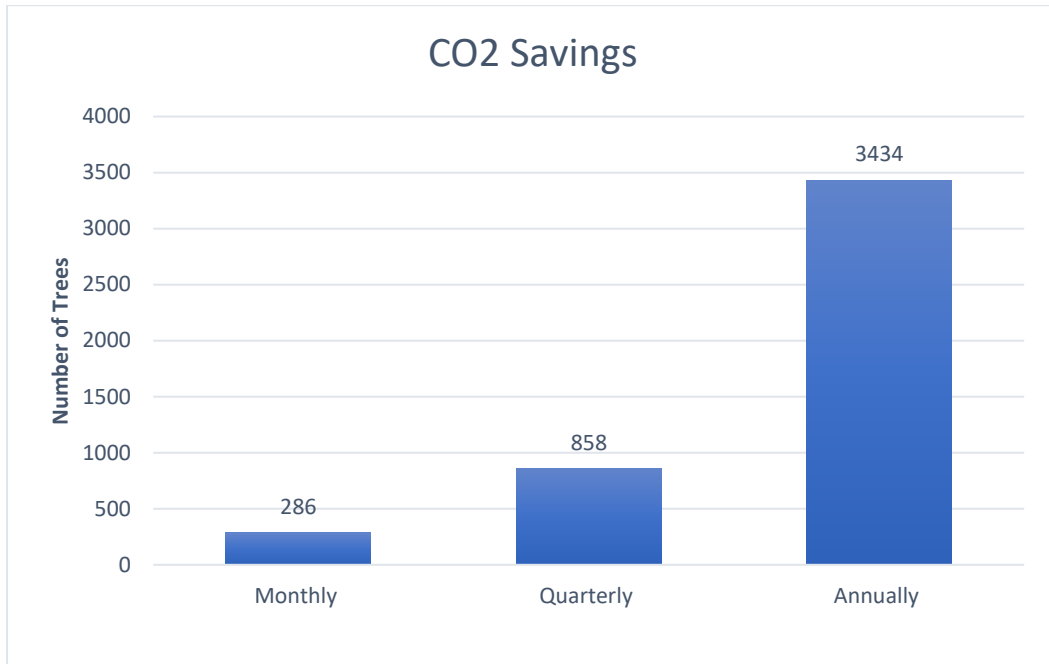
Public Transport travel options	# of staff	% of staff
1	1231	95.87%
2	1210	94.24%
3	1161	90.42%
4	966	75.23%
0	53	4.13%
5	0	0.00%
6	0	0.00%

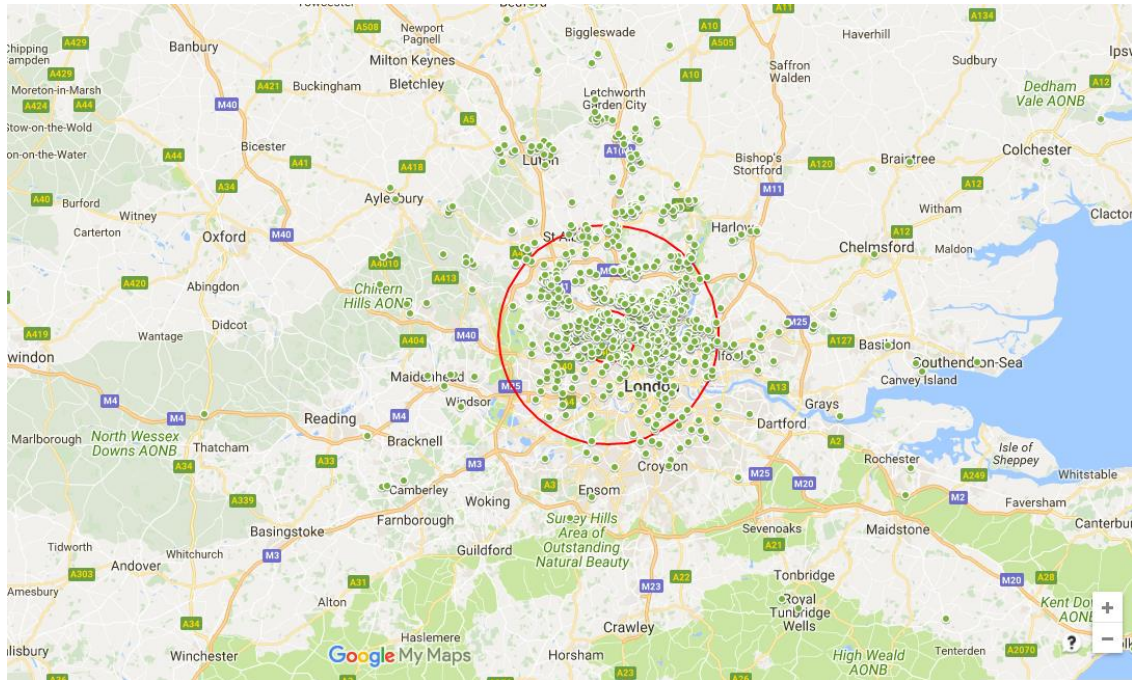
Number of Public Transport Travel Options



Savings and Health and Wellbeing

Minimum annual car parking savings (based on only 2 people car sharing) £17,058.46





Below link will open up a live Google Map with your data plotted along with some radial guides; 3 and 12.5 miles representing the walking and cycling radius.

[Link to Google Map](#)