



The Future

(According to Jisc)





8 IN A ROW

Translate this sentence



Στο άπειρο και ακόμα
παραπέρα.

To

infinity

and

beyond

twenty

seventy

CHECK












Is Slack the new LMS?



Module traffic lights

3 modules active

Module name	VLE Usage	Marks	Attendance	Issues
> Basic Jiscing				Show Issues
> Jiscing, Technology and Student Success				Show Issues
> Advanced Jiscing for Business				Show Issues

0 modules completed

0 other modules

DETERMINANT & RISK PROFILE/CORRELATION

(Inspired by 'Suicide Safer Universities - A Guide' and based on Ben's story)

NAME

Ben

SEX

Male

YEAR

1st

TRANSITION YEAR?



PRE-EXISTING HEALTH ISSUES?



CLEARING (NOT FIRM/INSURANCE CHOICE)



STRUGGLING ACADEMICALLY?*



HEALTH CONCERNS REPORTED?*



Ben's Snowdrops (Age 8)

SUPPORT/WEELLBEING & HEALTHCARE

Referred to Wellbeing?*



Missing healthcare appointments



PARENT/SCHOOL REFERENCE

Learning difficulty/concern



Recent bereavement/divorce



Health concerns



HALLS OF RESIDENCE

Hall struggle/fail to make contact



Behaviour/appearance changes



Involved in hall incidents



Misses canteen meals (if catered)



Official paper mail uncollected



Misses social events



STUDENTS UNION/STUDENTS

Non-attendance at events



Concern over behaviour/incident



Non-engagement in clubs/soc's



ACADEMIC

Tutor and student not met



Exam/assessments missed



Coursework deadlines missed



Quality of work poor/confused



Vacant/listless in study groups



Misses academic events



FACULTY/ADMIN & IT

Not registered/late registration



Fit-to-study/withdrawal process



Hall/tuition fees unpaid



Often submit work in early hours



U-Card usage concerns



E-mail access concerns



YOUR IDEAS TO ID THE VULNERABLE:



Known to the University

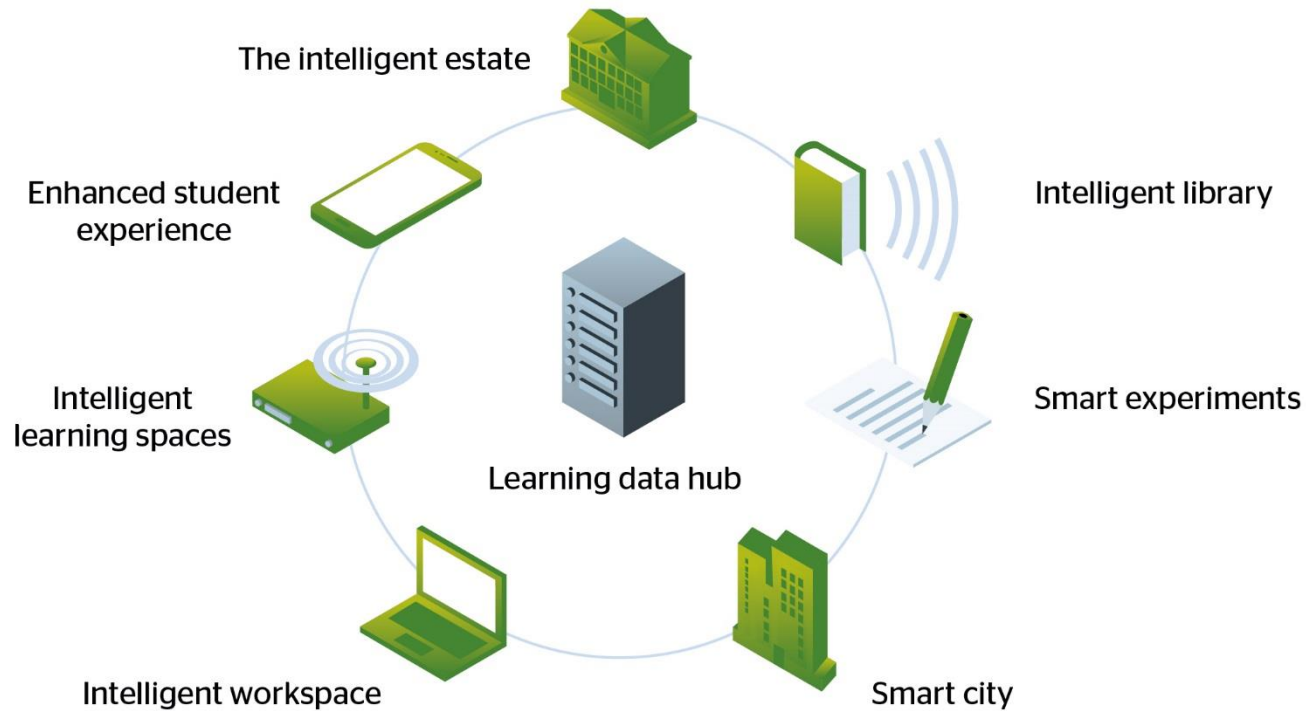


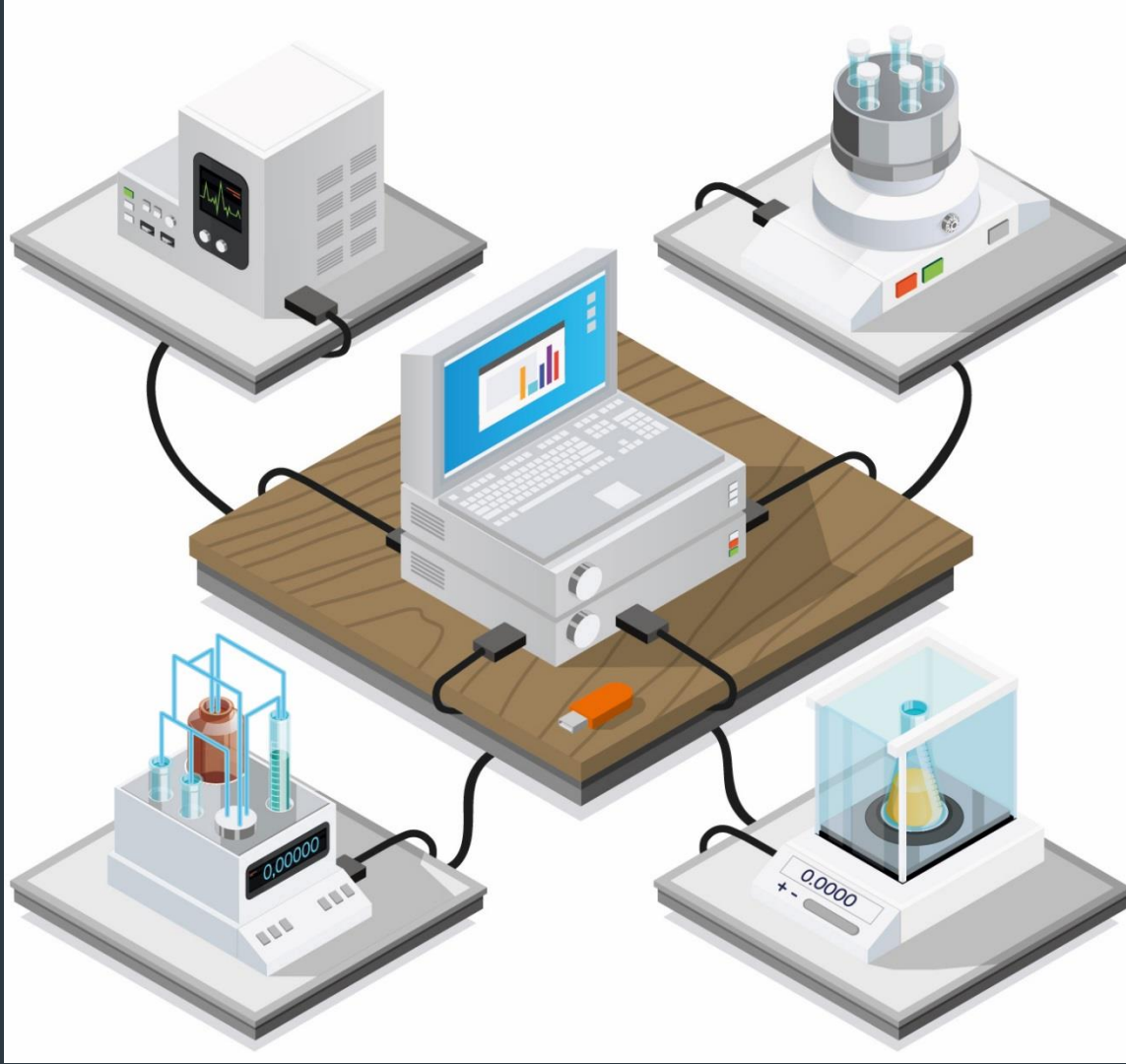
Known to school/parents

Not actioned/observed by University









Students' voice

What would you want from the University of Tomorrow?

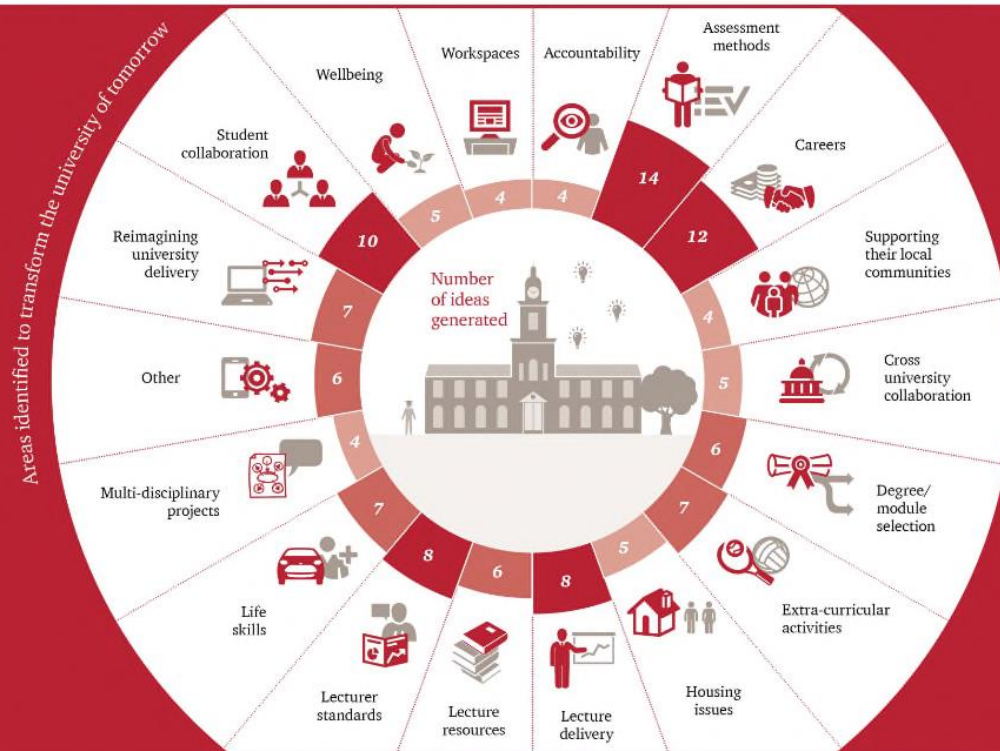
Key Statistics

125
Ideas

1473
Comments

2491
Votes

23,547
Views



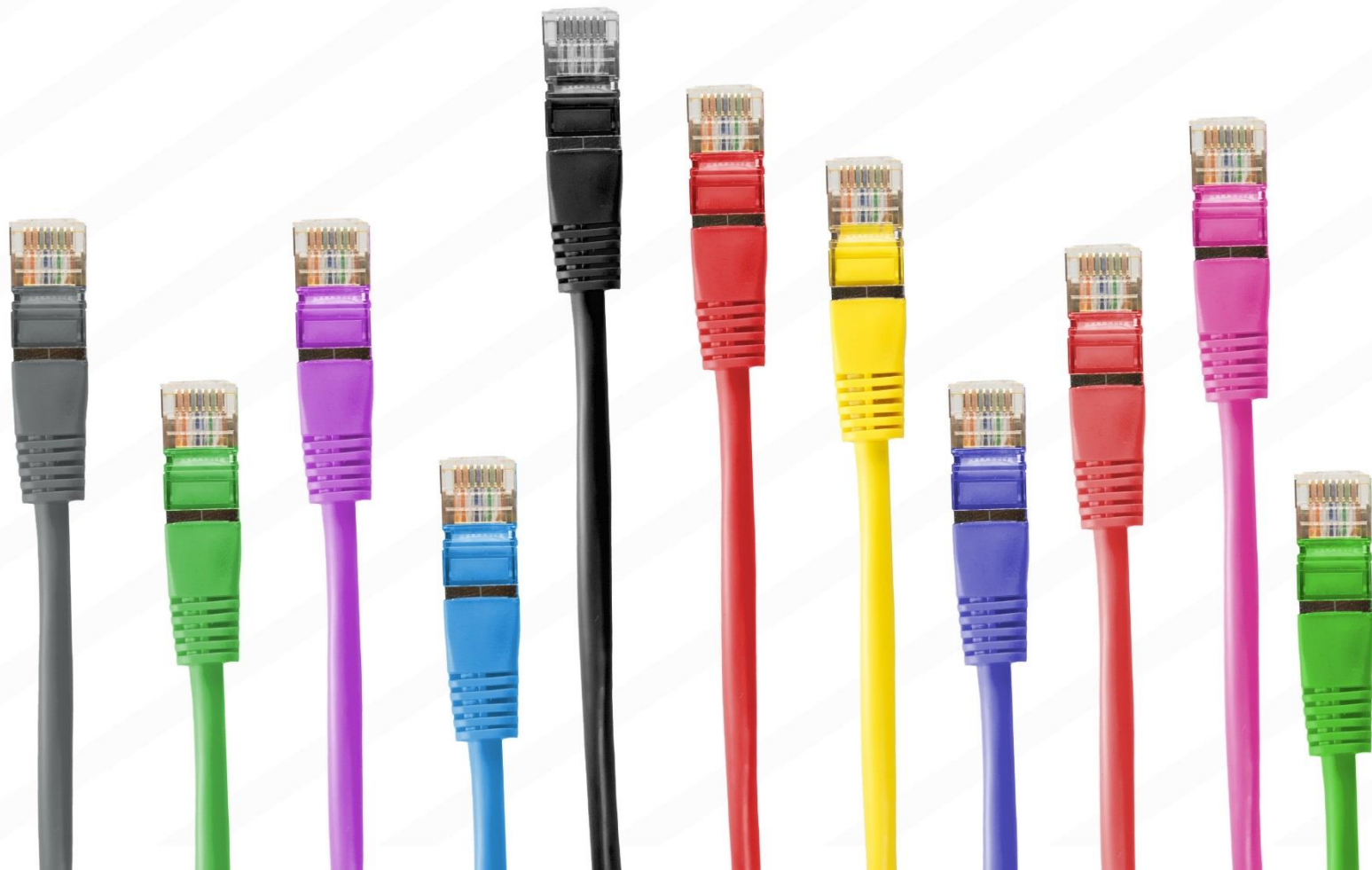
Potential solutions

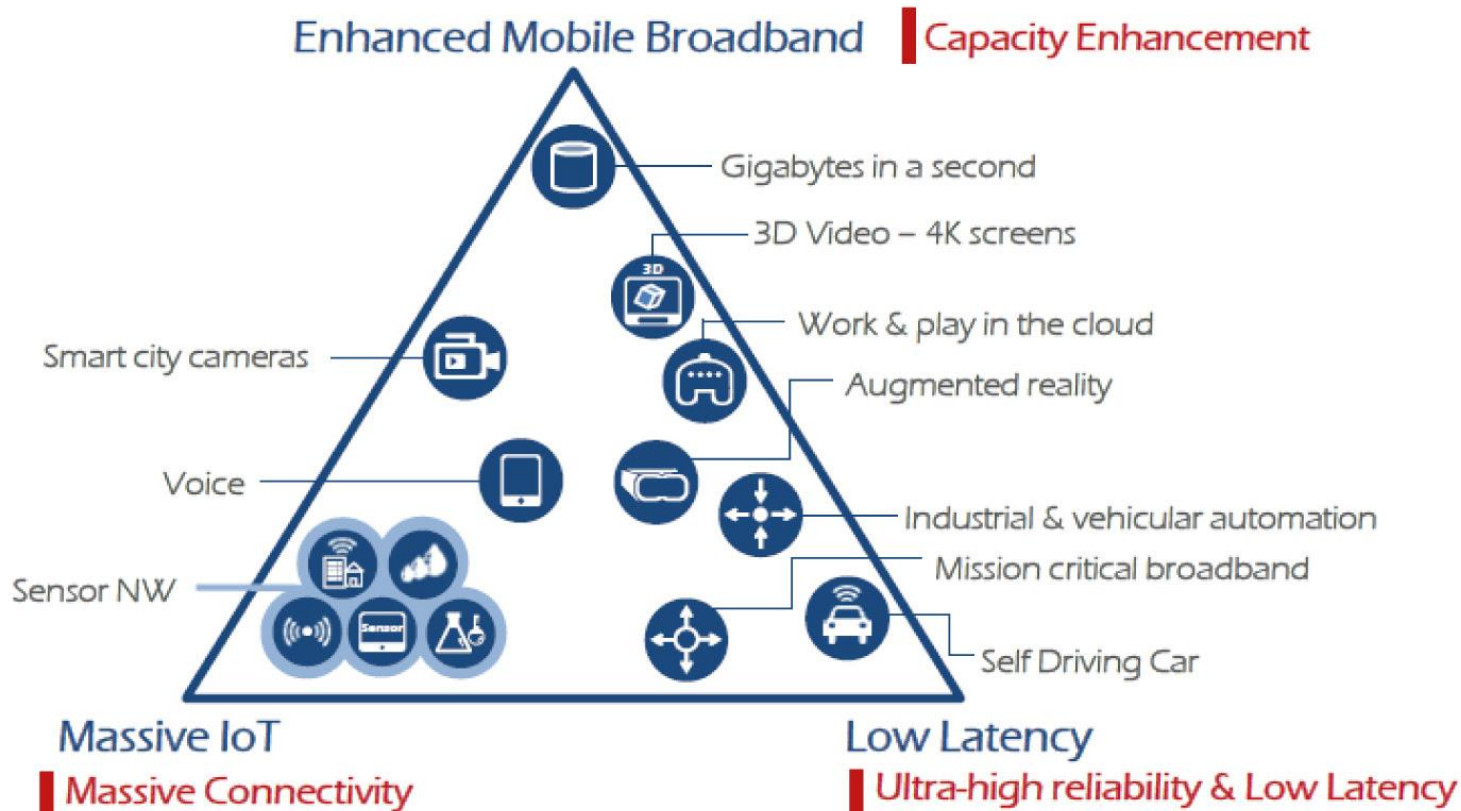


50% of the student's ideas identified Technology enabled solutions



44% of students' ideas proposed a shift in the strategy and governance of universities







(Blockchain) is predicted to use 42TWh of electricity in a year, placing it ahead of New Zealand and Hungary and just behind Peru, according to estimates from Digiconomist. That's commensurate with CO2 emissions of 20 megatonnes – or roughly 1m transatlantic flights.





Rob Bristow – rob.bristow@jisc.ac.uk

Intelligent Campus:

<https://www.jisc.ac.uk/rd/projects/intelligent-campus>

Jisc Future Trends:

<https://www.jisc.ac.uk/rd/future-trends>