



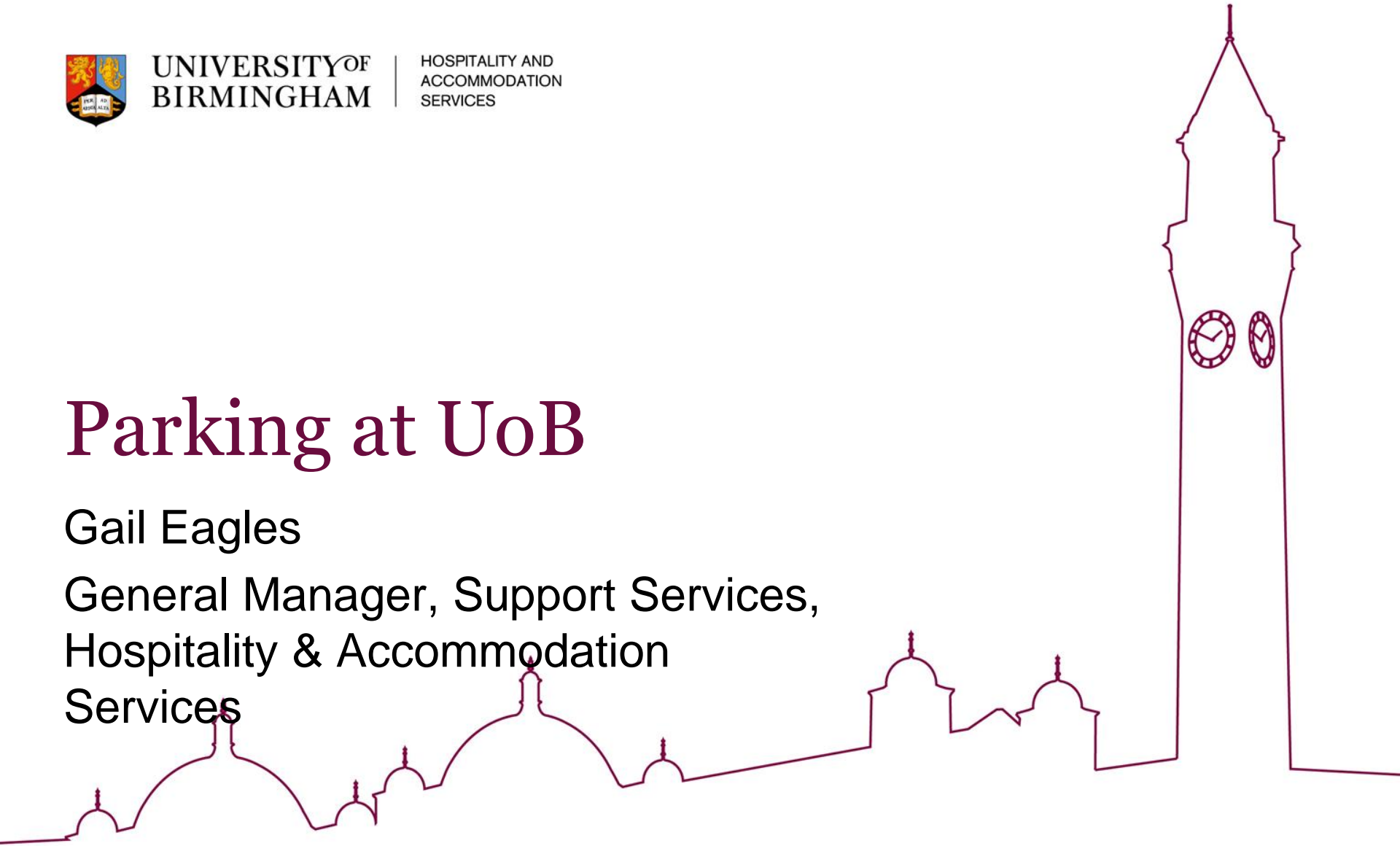
UNIVERSITY OF
BIRMINGHAM

HOSPITALITY AND
ACCOMMODATION
SERVICES

Parking at UoB

Gail Eagles

General Manager, Support Services,
Hospitality & Accommodation
Services

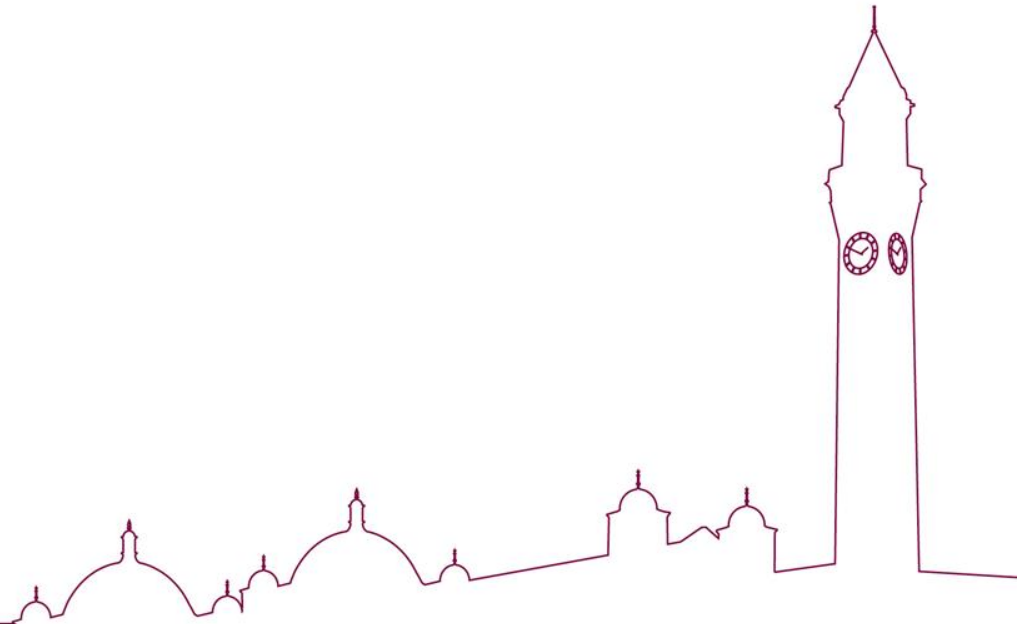




Welcome

Support Services – HAS

- ❑ Security & Emergency Planning
- ❑ PPT & Sustainable Travel
- ❑ ID card budget
- ❑ 2 Day care nurseries
- ❑ Winterbourne House & Garden
- ❑ Worklink
- ❑ HAS L&D
- ❑ Car Parking

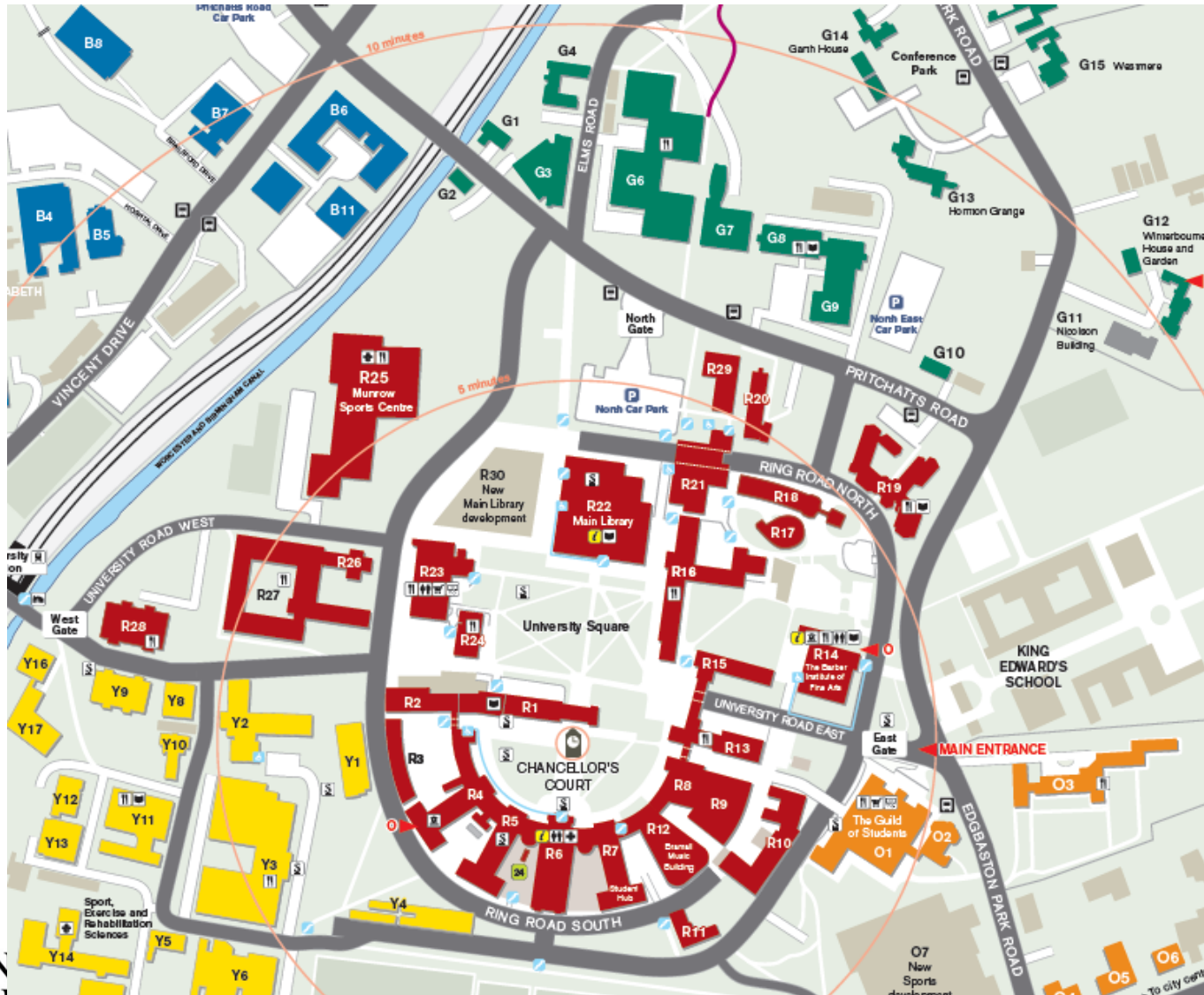




Car Parking History - where did it all start ...

- ❑ Permit issued - nominal payment
- ❑ 2001 – barrier installation
- ❑ Rules – Traffic regulations
- ❑ Type of permits
- ❑ Approvals
- ❑ Success?
- ❑ Supported the University Travel Plan

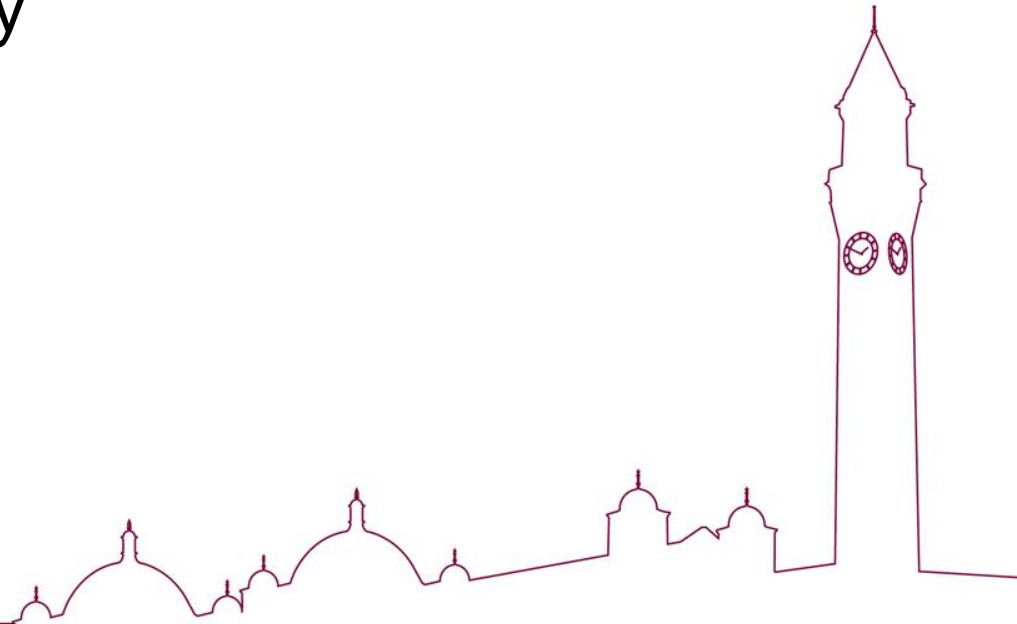






What we got as a result...

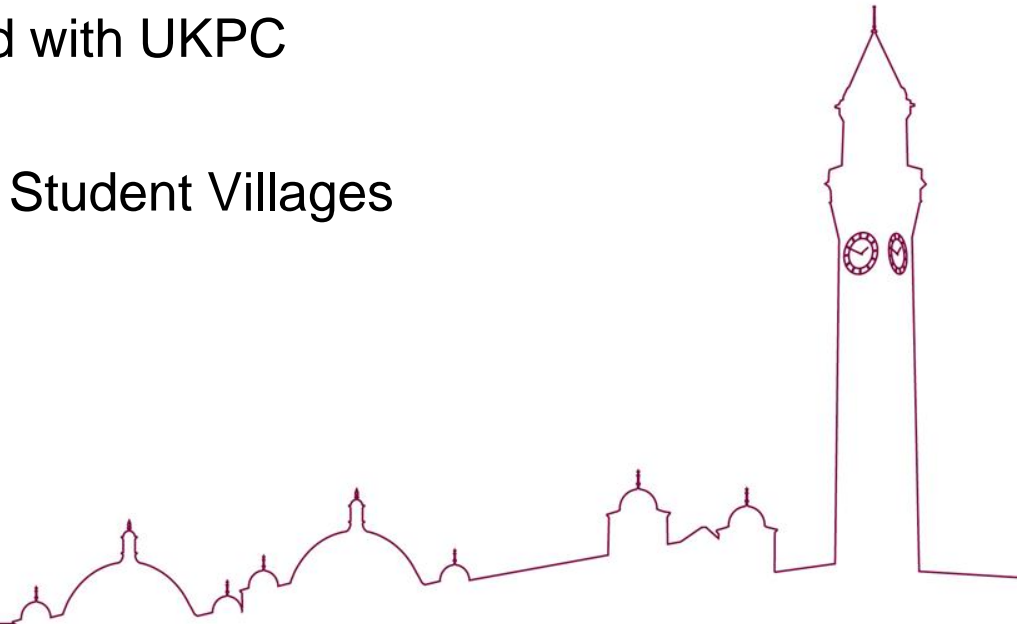
- Peripheral Surface/ P&D
- Barrier controlled entry
- Permit's –
 - Staff,
 - Students,
 - Visitors,
 - contractors





Reviews

- ❑ 2006 – £1 per day!!
- ❑ 2009 – Car Park Steering Group, strategy and travel survey
- ❑ 2011 – Enforcement introduced with UKPC
- ❑ 2013 – Peripheral buildings
- ❑ 2015 – Selly Oak Campus and Student Villages
- ❑ 2016 – Survey/ benchmarking



Headline

University	Staff Charges / system	Student Charges /system	Visitors and Contractors
Belfast - Queens	Charges based on Co2 emissions. Full time staff charges range from £12 per month for 0 road tax to £32 per month for highest rate road tax. (£144 - 384)	Student Parking Not Allowed Parking @ Student Residences only, 50p @ day.	No charge for visitors or contractors
Birmingham City	Charges based on Co2 emissions.	Student pay as you go	No charge for visitors or contractors
Bristol	0.83% of salary for all staff 2 mile exclusion zone	Student Parking Not Allowed Parking @ Student Residences £99 per yr.	Visitors: Full day parking £7 or £3.50 half day Contractors: £8.46 a day
Cardiff	Salary sacrifice scheme 3 levels based on salary Low £196, Med £300, High £345 Eligibility criteria set on length of service with the University.	Student Parking Not Allowed £180 per academic session (Oct - Jun)	Visitors: no charge but limited space Contractors: £330 per vehicle per annum
Durham	No charge, no current criteria but process under review	No charge but priority given to students with medical needs	No charge
Keele	0.3% of salary.	Zoned parking charges from £20 to £90 Resident students not eligible	Visitors: P&D - £1 up to 2 hours - £6 per day Contractors: No charge (yet!)
Leeds	Charges based on emissions and salary band. 2 mile exclusion zone. Point system - extra points for car sharing, requiring car for business use, shift work, distance	Student Parking Not Allowed	Visitors: £7 per day during core hours, standard tariff outside core hours Contractors: As visitors but regular contractors pay an annual fee of £725
Liverpool	£2.17 per day from salary. No criteria	£6 per day in visitors car park or can purchase a card in advance monthly. ½ yearly, annual.	£2.00 first hr, £1 per hour after that. Over 4 hrs = £6 per day.
Manchester	Salary banded between £150 and £400 pa.	Student Parking Not Allowed Can park as a visitor in public car parks if they wish	Visitors £2 per day (under review) Contractors £50 per month.
Newcastle	Permit £50 per annum or £4 per day pay & display	Student Parking Not Allowed	Contractors assessment required the £4 per day, daily meter charge
Sheffield	Location based (3 locations) Central campus £804 for a dedicated space (criteria based) £480 or £2 per day for a licence to hunt space (criteria based) £5 per day pay & display (must live more than 1 mile away) 3 mile exclusion zone Residential campus £120 per annum	Charges same as staff	Visitors: £3.40 per day paid for by the dept they are visiting. Contractors: £7 per day
Southampton	Range of charges based on pay grade	Student Parking Not Allowed , only permitted in exceptional circumstances (med/disability)	Visitors £1 per hr. Contractor permits not charged but space justified based on work being undertaken
Wolverhampton	No charge, no criteria	No charge. No student access to City campus car parks	No charge
York	0.6% of salary. No current criteria but under review	£35 per academic year Distance criteria	Visitors: £6 per day or 31 per hour Contractors: £400 per year, £40 per month or £6 per day



What to do as a result...

- ❑ Privilege spaces for car share users
- ❑ Apply monthly pay deduction & retain P&D
- ❑ Apply an exclusion zone?
- ❑ Increase costs?
- ❑ Charge for permits?
- ❑ Introduce criteria for staff?
- ❑ Extend charging hours?





UNIVERSITY OF
BIRMINGHAM

HOSPITALITY AND
ACCOMMODATION
SERVICES

It's good to talk...

