

REMADE
NETWORK

Nepal



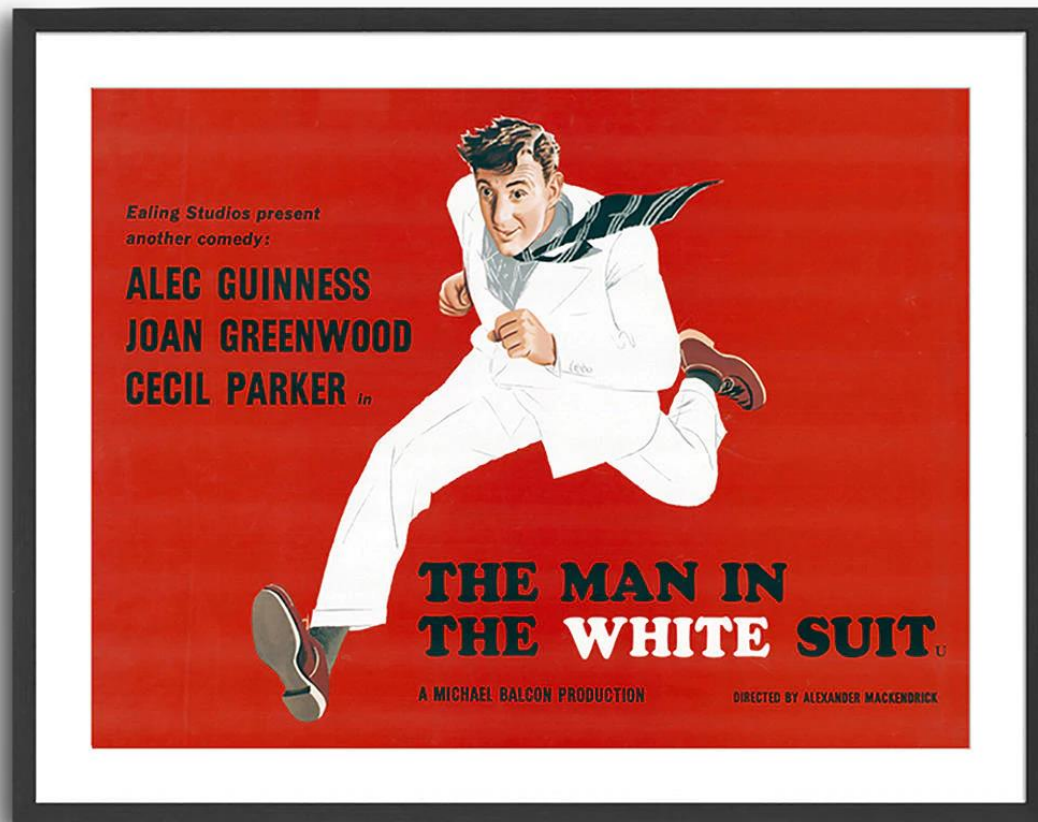
Flanders



WASTE

- 33% of all goods that are thrown away are still in working order
- 32% of Scottish people say they've got a broken / unwanted smartphone at home
- 50% of all waste electronics in Ghana are from the UK - 17,765 tonnes
- 80% of all waste electronics is sent to 'developing economies'.

A new business model



Education at heart of business model

- Not just fixing - learning how to fix
- Learning, developing and sharing learning in the business model through the network
- Partnership with Universities: piloted relationship in Edinburgh with Edinburgh University for supply of and resale of unwanted IT kit.
- Creating new skills through a repair academy to promote practical repair and sustainability education and awareness of manufacture and ethics in supply chains

Garages on Lilford Road, Brixton



Inside the Remakery in Brixton



Early Remade in Edinburgh locations



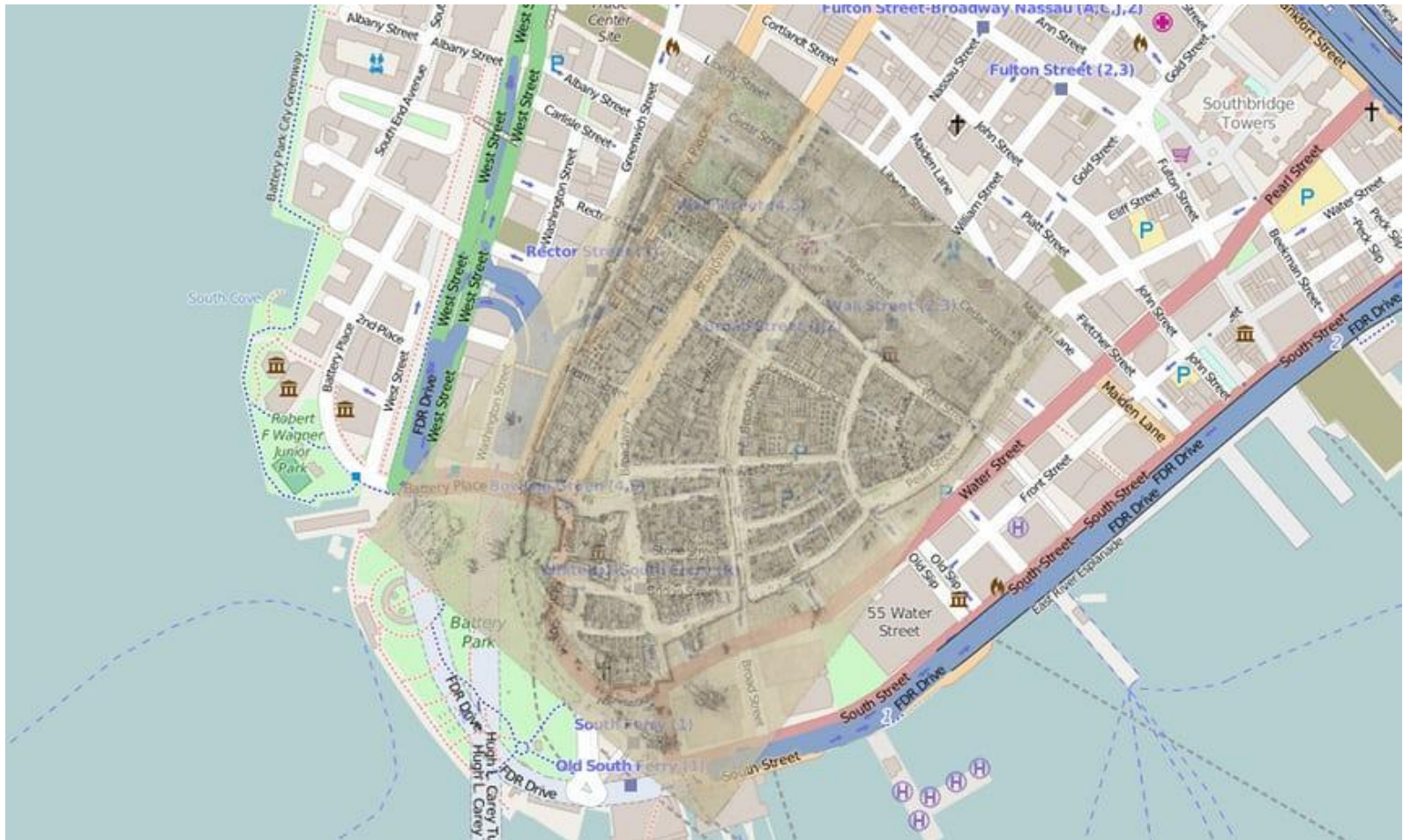
Edinburgh Remakery Leith Walk



Edinburgh Finances – from £60 to £220,000 in 6 years. 0% to 80% traded income

	2017	2016		2014	2013	2012	2011
Income	212,000	228,000	72,000	53,673	37,899	17,476	7,499
Trading	80%	40%	64%	51%	70%	10%	0%

New York - a city built on trash generates 14 million tonnes / year



Vintage props in the e-waste warehouse



Glasgow - City Wide Approach

Repair as Regeneration

2017 Glasgow recycling rates: 25%

2025 targets: 70% recycled + 5% maximum to landfill

Support from Glasgow City Council

2020-2022 programme of work to open up more repair hubs in high streets through the city and a repair academy.

Working with Warplt.

Key material streams: IT, Furniture, Textiles

Last 12 months

International work in Brooklyn, Montreal, Belfast and Barcelona

Developing partnerships across Scotland

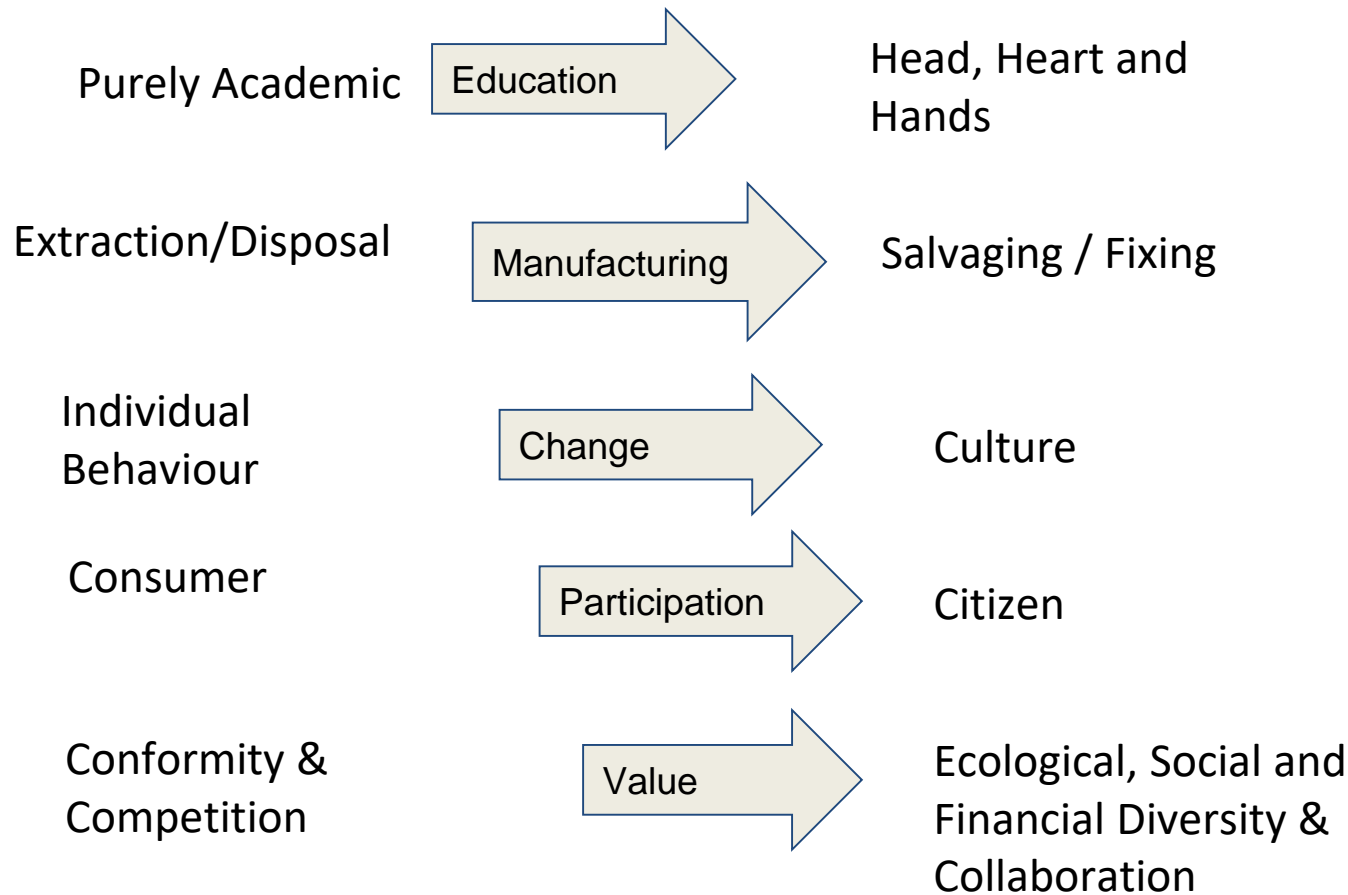
- Highlands and Islands Enterprise,
- Development Trusts
- HE and FE sectors
- Local Authorities
- Corporate

Scotland wide approach

Innovating and learning in different places by working out what is unique and particular to each community and building the relationships and collaborations there.

- City - Glasgow
- Countryside - Scottish Borders
- Island - Mull
- Town - Huntly

Creating a network that adds value to the existing sector



Place-Making Agenda - adapting to need



Gathering evidence and stories



Why invest in repair?

- Repair creates at least 10x as many jobs as recycling (institute for self reliance)
- Creating a job in repair costs £15,000 – 10% of the investment needed for a job in energy from waste
- With phase out of landfill incineration needs 25 year investment cycles

What are the key criteria for a reuse and repair centre?

Community: Open to all, affordable and inclusive

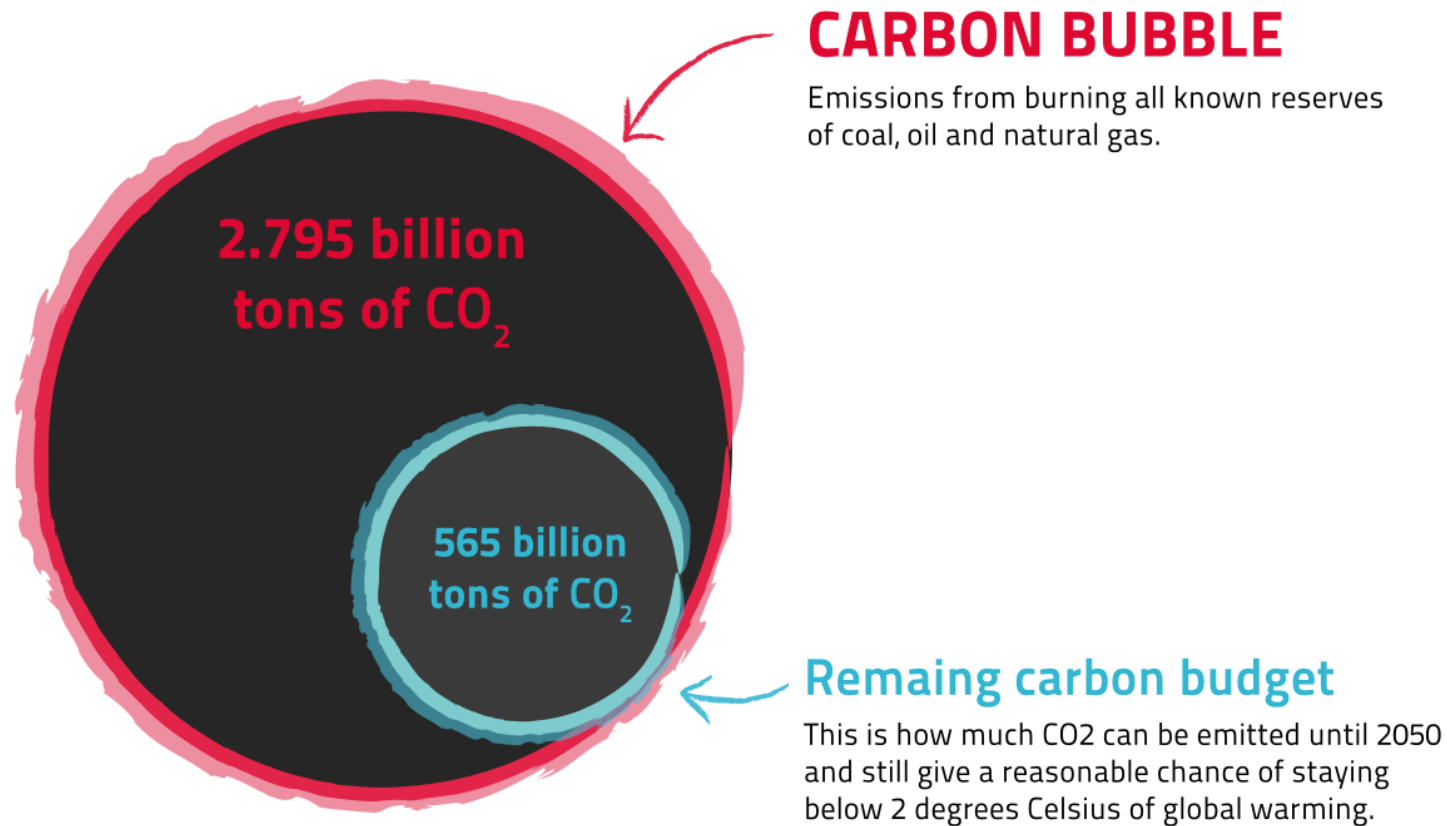
Financial: 80% traded income to generate jobs

Environmental: Working strategically and with rigorous impact measurement.

Partnership Working - building on assets in place.

Mainstreaming Repair

From extractive to regenerative



Partnership Opportunities

hello@remade.network

Fixing Factories

Remade Academy

Repurposing unwanted material
streams

Placements and apprenticeships

Community facility for take-back

REMADE
NETWORK