

Europe, Middle East & Africa

AE	+971 4 399 6934	HR	+385 1 2315 027	RS	+381 11 212 9579
AT	+41 44 913 68 00	HU	+36 1 3 84 90 05	RU	+7 495 234 57 27
BA	+387 33 522 534	IE	+353 1 679 8466	SA	+966 500615423
BE	+32 2 475 27 27	IL	+972 546602102	SE	020 801 801
BG	+359 2 808 303	IT	+39 02 890 93678	SK	+421 244 454 323
BY	+375 17 226 75 14	KZ	+7 495 234 57 27	SI	+386 1 520 0500
CH	+41 44 913 68 00	NL	+31 33 277 5555	TR	+90 212 365 5506
CZ	+42 0 233 087 111	MK	+38 9 23 224 210	UA	+38(044)238 27 67
DE	+49 2151 3718 0	NO	+47 23 12 01 70	UK	+44 (0)1274 698503
DK	+45 33 79 70 55	PL	+48 (0) 22 862 44 69	ZA	+27 11 6083324
ES	+34 932 418 750	PT	+351 217 122 740		
FR	+33 1 58 10 20 20	RO	+40 21 317 12 40/42/43/44		

Where we learn matters  
Modular flooring for Tertiary Education







# STAY AHEAD OF THE LEARNING CURVE

The students arriving on campus these days are very discerning. Their goals differ from those of the previous generations. And they bring a strong sense of community, both local and global.

To attract and inspire a new generation of students requires engaging environments that stimulate new connections and create the best conditions for learning and innovating.

Interface is the leading global manufacturer of carpet tile. We are always looking towards the future and lead by example in design, innovation and sustainability. We can help you design great spaces with sustainability built-in. Read on to learn how we can support you.





# *THE FUTURE IS NOT WHAT IT USED TO BE*

Societal and environmental challenges call for new ways. New ways of connecting. New ways of doing business. New ways of learning.

Institutions can adapt to these changing requirements and play a role in addressing the problems of the future - now. Combining people, planet and profit.

At Interface, we know the importance of great partnerships. One of our partners is the Zoological Society of London (ZSL). Together we created the Net-Works™ programme - to clean up beaches and coastal areas and turn discarded fishing nets into a precious raw material for new carpet tiles. At the same time, the programme provides an additional source of income for some of the poorest people in the world.

# COLLABORATION IN EDUCATION

Education is better together. Interface supports a number of initiatives within the education sector.

## *Environmental Association For Universities And Colleges (EAUC)*

Interface is proud to be the only flooring specialist associated with the EAUC, the sustainability champion for universities and colleges in the UK. As a platinum sponsor we share our best practices and collaborate with the EAUC members (over 300) to pave the way towards a more conducive and sustainable learning environment.



## *Building Information Modeling (BIM)*

BIM has transformed the way we plan and design buildings, and Interface was the first UK carpet tile manufacturer to be listed on the NBS National BIM Library.

The NBS National BIM Library is the UK's leading BIM resource – free to members of the construction industry. Interface has over 600 live objects in the BIM library, so anyone involved in your project can find what they need in just a few clicks.



## *Green Apple Day of Service (GADOS)*

In 2012, the Green Building Councils and Interface started an initiative to raise the awareness on the subject of health and sustainability in education. The idea is to 'put all children in schools where they have clean and healthy air to breathe, where energy and resources are conserved, and where they can be inspired to dream of a brighter future'. In 2013, more than 200,000 volunteers in 2,091 communities hosted projects in 41 countries, raising more than \$2 million in project donations and impacting over 2.8 million students around the world.



## *Interface Environmental Education Grant*

We believe good ideas about environmental stewardship often come from grass roots efforts. Hence the Interface Environmental Education Grant. The programme provides grants for educational projects that advance environmental awareness and responsibility. Since 1999, we have contributed over £154,000 to benefit more than 69,000 students and instructors around the world.

# Interface®



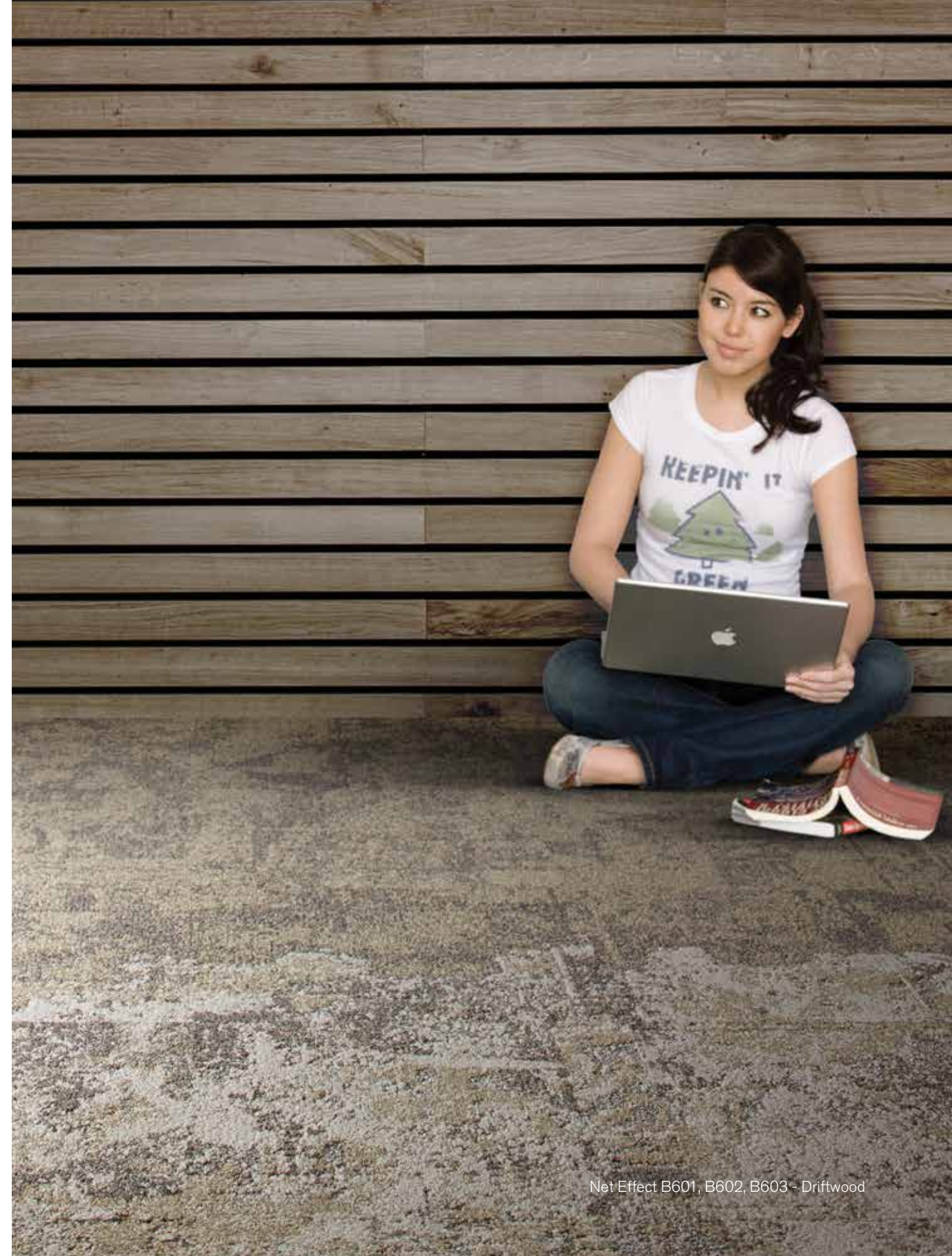
# *SUSTAINABILITY - BUSINESS AS USUAL*

In a world with scarce resources, we have to be mindful about how we use them, and how we integrate sustainable thinking in education, in business, and in our built environment. Sustainability is not just about ecology, but about creating viable institutions for the long term.

At Interface we have proven that sustainability and economic results can go hand in hand. Led by our Mission Zero® commitment - to eliminate our environmental impact by the year 2020 - our manufacturing facility in the Netherlands has become a living example of sustainable progress.

Our factory now runs on 100% renewable energy, sends zero waste to landfill and uses virtually zero water in the manufacturing process. Combined with energy savings, this means we have reduced the carbon footprint of our operations in Europe by an estimated 90% in 2014 compared to 1996.

We love to share our experiences, and our Sustainability Ambassadors are often asked by leading education institutions to share best practices and lessons learned.







## LOVE IT!

Stimulate the senses and you stimulate the mind. A truly green building is about more than just a performance checklist. It should be beautiful as well. A place where students want to be, even when they don't have a class. A space that can fulfill different functions throughout the day.

By using diverse colours and textures, you can create stimulating and sensory environments that can adapt to different usages and encourage collaboration. Are you looking for a soft tranquil feel for quiet concentration? Or do you need vibrant colours and varying textures to energise the users?

With modular carpet it's easy to create flexible spaces that can be used for multiple purposes. It can also guide way-finding and navigation between different floors or departments. Create zones by simply changing the carpet's colour or texture.

With our wide portfolio of products, the creative possibilities are endless. Our team of designers can help you create the perfect floor for your needs.





# *NATURE IS OUR INSPIRATION*

When asked for their favourite kind of place, almost everybody thinks of a place in nature. Bringing the outside inside feeds our innate desire to be connected to the natural world. This desire for nature is called biophilia.

Incorporating biophilic design principles allows students to become more productive. The consideration is not just one of aesthetics, but of economics as well. The effects of mimicking nature's stimuli are remarkable. Being in spaces created using biophilic design principles can lower our blood pressure and heart rates. These spaces can also positively impact our happiness and concentration.

At Interface, we are in love with nature. We try to learn from her. Our vast collection of carpet tiles features many random patterns, as you would find in nature, making them more efficient to install and maintain. We are also using biophilic design principles, bringing natural analogues to the indoor environment.

Discover more about Biophilic Design at [www.humanspaces.com](http://www.humanspaces.com)



# THINGS CHANGE – SO COULD YOUR FLOOR

Different activities need different spaces. Spaces should respond to students & staff needs, be flexible and adaptable to utilisation and task - and flexible to economic requirements as well. When your requirements change, you should be able to change the layout.

A modular carpet is easy to remove, redesign or replace. The modularity means quick and easy tile exchange when needed, and makes it possible to change part of a space with minimal disruption and cost.

Our different styles and formats of 50 x 50 cm squares and 25 x 100 cm skinny planks are designed to work together, and to accommodate to changing needs.

Flexibility is built-in, so you are ready for the next change.



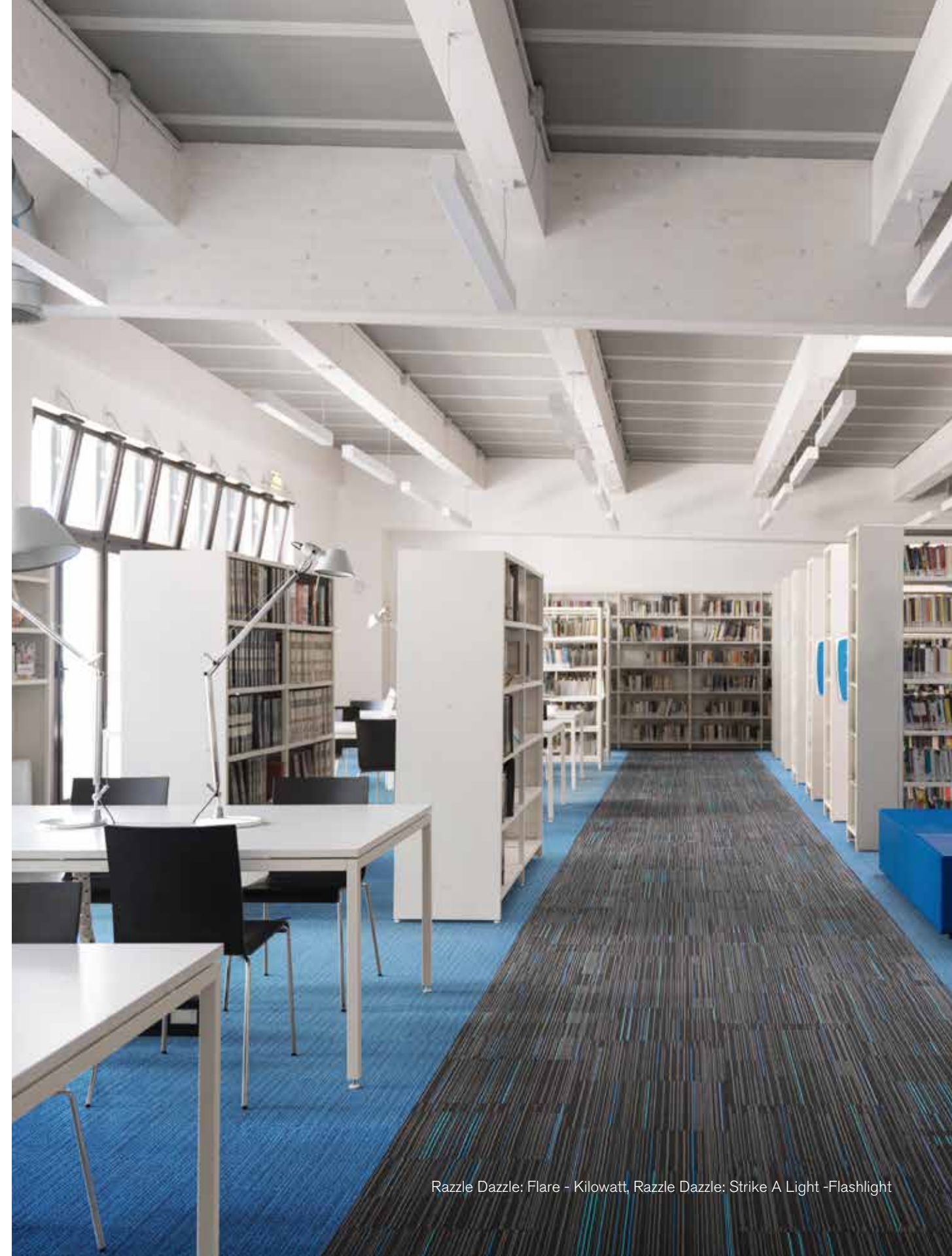


# *SORRY, WHAT?*

A student's ability to hear and understand what is being said in class is crucial for concentration and learning. Improving sound quality means better performance and less fatigue for students and staff alike. And don't forget student accommodation. Students need their sleep as well...

A good acoustic environment is always the result of many factors, but to effectively control noise from footsteps and other impacts, no flooring alternative is more effective than carpet. This means a lecturer is easier to hear, better concentration in informal study areas and better sleep in student accommodation.

Design the right experience by thinking about all the senses. For the majority of projects, acoustic and ergonomic comfort can be achieved with standard Interface carpet tiles. Our enhanced acoustic backing options, SONE® and Interlay, can be used for areas that have more complex needs.



Razzle Dazzle: Flare - Kilowatt, Razzle Dazzle: Strike A Light -Flashlight





# *ALL DAY, EVERY DAY... AND NIGHT*

Education is a state of mind. Being a student is a way of life that does not start - or end - during class. Creating places where students can gather on campus can lead to more chance encounters and better collaboration.

Student accommodation is an important part of every student's life. It has to be fun and inspiring, as well as a place to rejuvenate and relax. It also needs to stand up to heavy use.

Use of colours and textures can help create a varied and comfortable atmosphere for the students. A soft neutral backdrop can create the feeling of an inviting hotel room. A colourful finish can be invigorating and gather people in shared spaces.

Interface modular carpet offers fresh and funky designs. It is also hard-wearing and easy to install, maintain and replace. Using our glueless TacTiles® installation system can eliminate the odour and emissions associated with the use of traditional glue to help create a pleasant healthy environment.





# *MANAGING WEAR, MINIMISING WASTE*

Flooring should be beautiful and hard-wearing at the same time. In most spaces, 20% of the floor gets 80% of the wear. The possibilities for maintenance and replacement determine a large part of the total cost of ownership.

Modular carpet makes it easy to create dynamic designs and lets you refresh your floor only where it's needed. Using design by tile you can reinvigorate a space, while replacing only a small selection of tiles.

Modular flooring also saves waste during installation. Interface products with a random design let you install the carpet tiles in any direction and generate only 1-2% installation waste. They also make selective replacement easy and require less stock of extra tiles.



# KEEP IT FRESH

Refurbishing a space can be costly. Product quality becomes visible in the years after installation. A good maintenance and cleaning regime can save money and keep a floor beautiful for years.

Interface products generally have a 15 year warranty. With proper care and maintenance our products keep their looks.

We can help you select products that are easy to maintain for the type of room and use, according to your needs and design scheme. We also advise how you can take preventative measures through the use of effective barrier mats and a planned maintenance scheme. And we can help provide training to cleaning personnel on daily and periodic maintenance and spot removal to protect your investment and keep the carpet looking good and fresh for years.





# *A USEFUL SECOND LIFE*

Creating a closed loop system is essential to save precious resources and for Interface to reach Mission Zero.

When it's time to replace your carpet tiles, we can help you dispose of them in the most responsible way, by reusing or recycling them. We accept products from other manufacturers as well as Interface carpet tile.

Our ReEntry® 2.0 recycling process, based at our Scherpenzeel site, uses advanced technology to separate the main components of the carpet tile, so they can be transformed into raw materials for new products. We also work with social ReUse partners, to extend the useful life of the carpet where possible.

When unwanted carpet is reused or recycled, we will issue a certificate as proof of your responsible approach to dealing with waste.





# LET'S TALK

Want to know more? Don't hesitate to get in touch! Use us as a sparring partner to explore the endless possibilities.

Our team is ready to support you with advice on design and sustainability or sample material. For more inspiration, talk to our Concept Designers or call into our local showrooms.

We'd love to hear your questions and collaborate on ideas.

