



EAUC Annual Conference University of Leeds 23 – 25 March 2015

CHALLENGING CONNECTIONS

Incorporating the Student Sustainability Summit, Further Education Sustainability Summit and Transformational Leadership Summit

Workshop 15: Biodiversity in Leeds – Challenges and Success

*Michael Howroyd, Sustainability Projects Co-ordinator,
The University of Leeds*



@TheEAUC
#EAUCConf15



Conference Sponsor

CarbonCredentials



EAUC Annual Conference **University of Leeds** 23 – 25 March 2015

CHALLENGING CONNECTIONS

Biodiversity in Leeds Challenges and Success

Michael Howroyd
Sustainability Projects Co-ordinator
The University of Leeds

Conference Sponsor



CarbonCredentials

**Partnership and
Engagement**



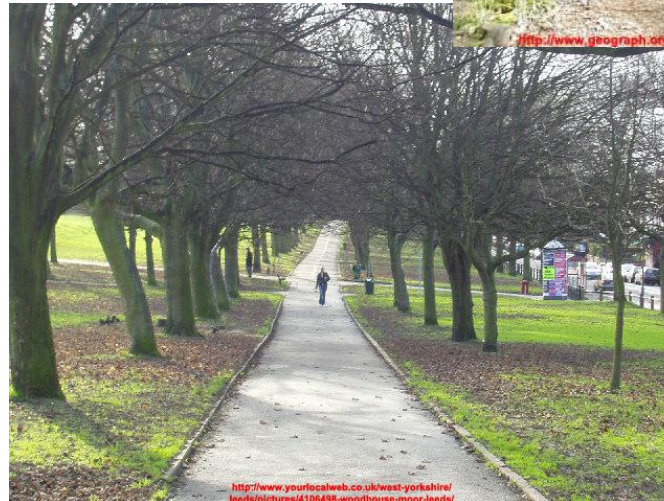
Biodiversity in Leeds



Partnership and
Engagement



- Leeds City Council BAP
 - Two action plans relevant to the University – hedgerows and Pipistrelle bats
- Woodhouse Moor LNA
- Woodhouse Ridge LNA
 - 1km away



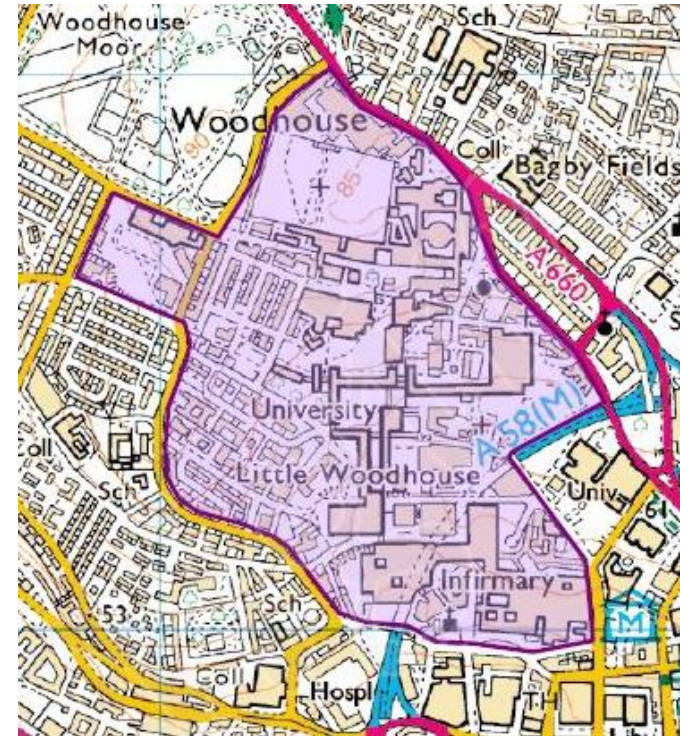
The University of Leeds



Partnership and
Engagement



- City centre campus
- Residences
- Sports grounds
- Large population
- Mixed-use
- Strategically located at the end of a green corridor



Biodiversity Planning



Partnership and
Engagement



- Largest capital programme since the 1960s
- Large, openly accessible campus
- Mixture of buildings and spaces
- Opportunity for change
- Baseline ecological survey
- First biodiversity action plan



Early Implementation



Partnership and
Engagement



- Governance
- Raising awareness
- Embedding
- Wider links
- Sharing knowledge
- ‘Challenging connections’



Strengthening Networks



Partnership and
Engagement



- Community & corporate links
- Annual events
- Bespoke campus networks
- Living lab



Yorkshire

Yorkshire
Wildlife Trust



Widening Participation



Partnership and
Engagement



- Sustainable Garden
- Edible Campus Corridor/String O'Beats project
- Sustainability Action Group (SAG)
- Community Engagement
- Collaborative Working



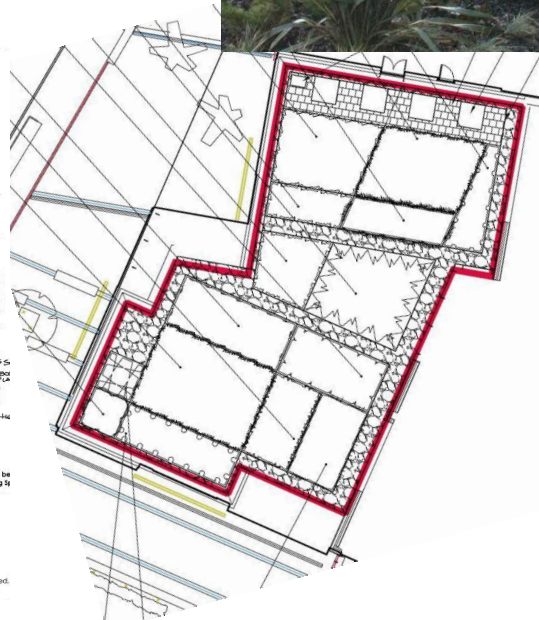
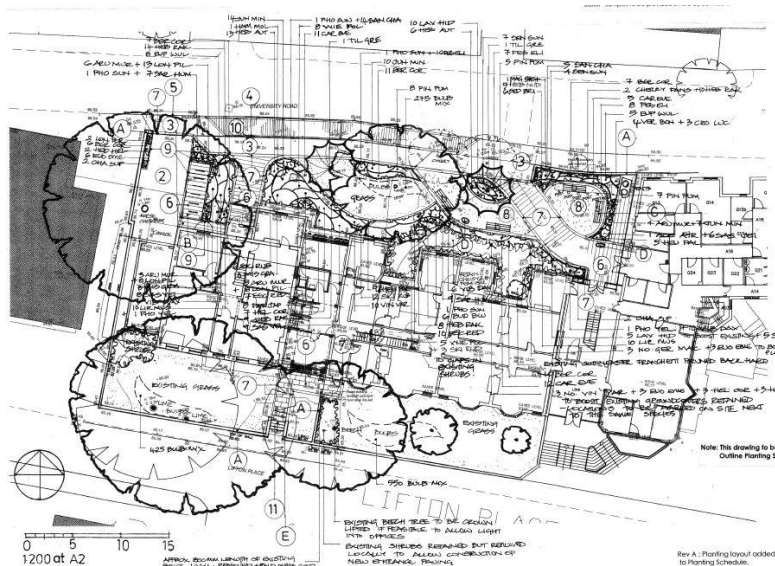
Progress



Partnership and
Engagement



- 'Easy wins' stage complete
- Processes becoming embedded into the University culture
- Increased collaborative working and engagement



Looking Forward



Partnership and
Engagement



- Campus Masterplan
- New 'biodiversity standard' will be a blueprint for all future projects.
- Challenging targets
- Urban space demands
- Innovation
- Wider scope/inclusion



Establishing New Benchmarks



Partnership and
Engagement



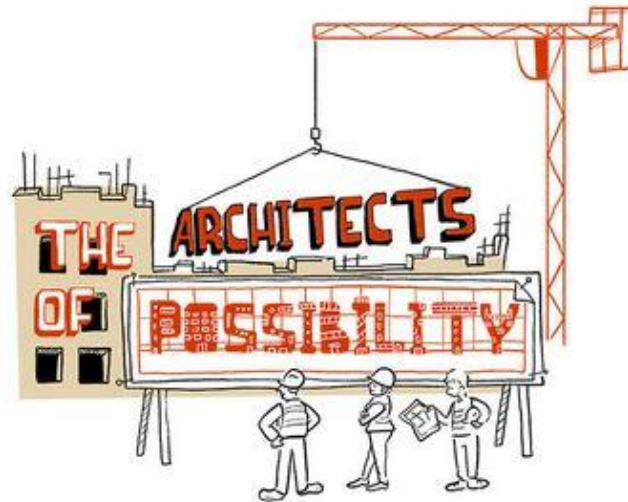
- Evolving campus/Growing city
- Restrictions/opportunities
- How will the campus look in the future?
- Pocket habitats
- Academic engagement
- Widening participation



Questions?



Partnership and
Engagement



sustainability.leeds.ac.uk
sustainability@leeds.ac.uk



www.facebook.com/UoLSustainability



[@UoL_Sus](https://twitter.com/UoL_Sus)