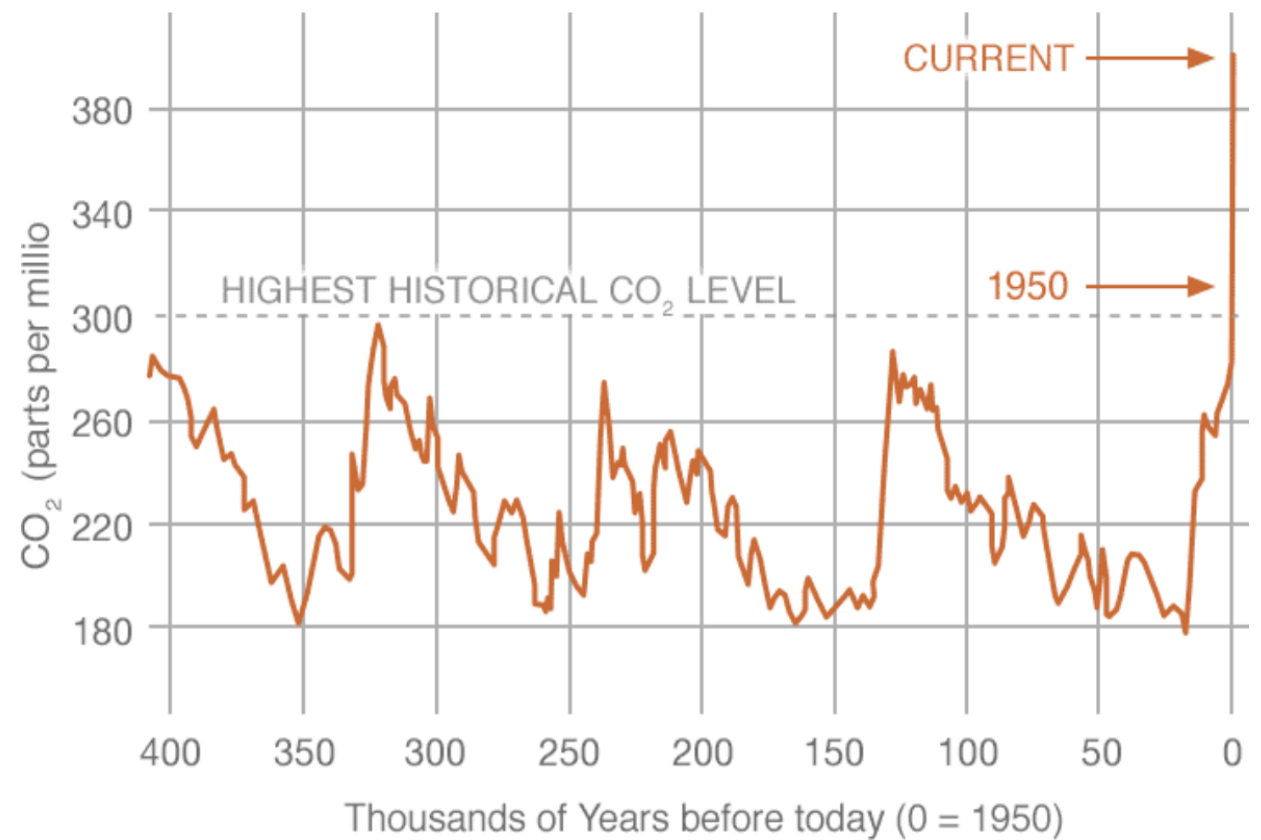
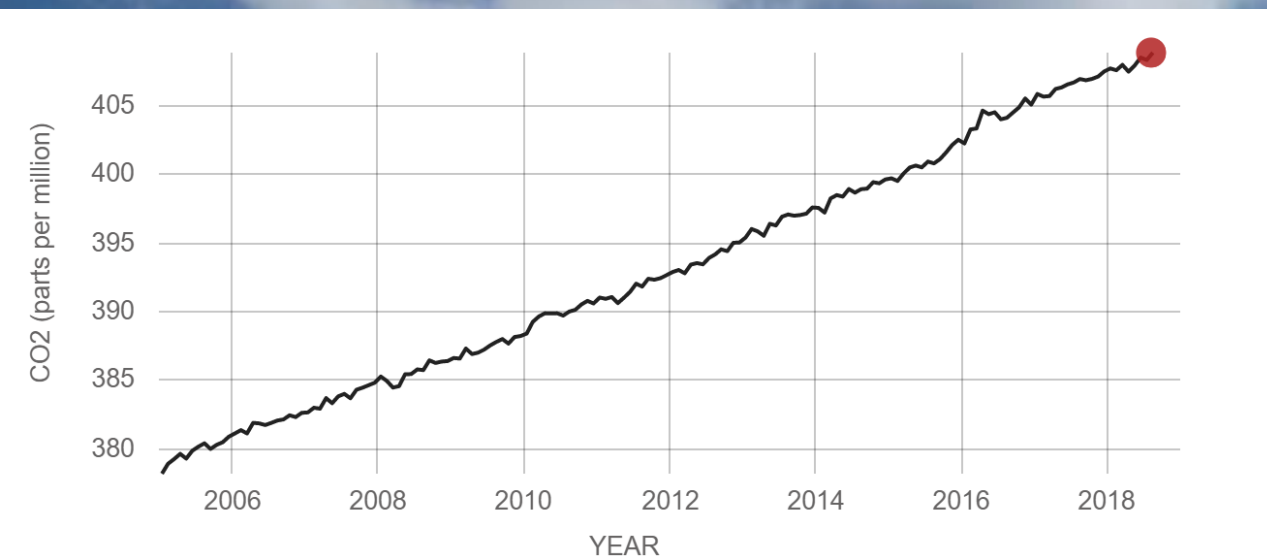
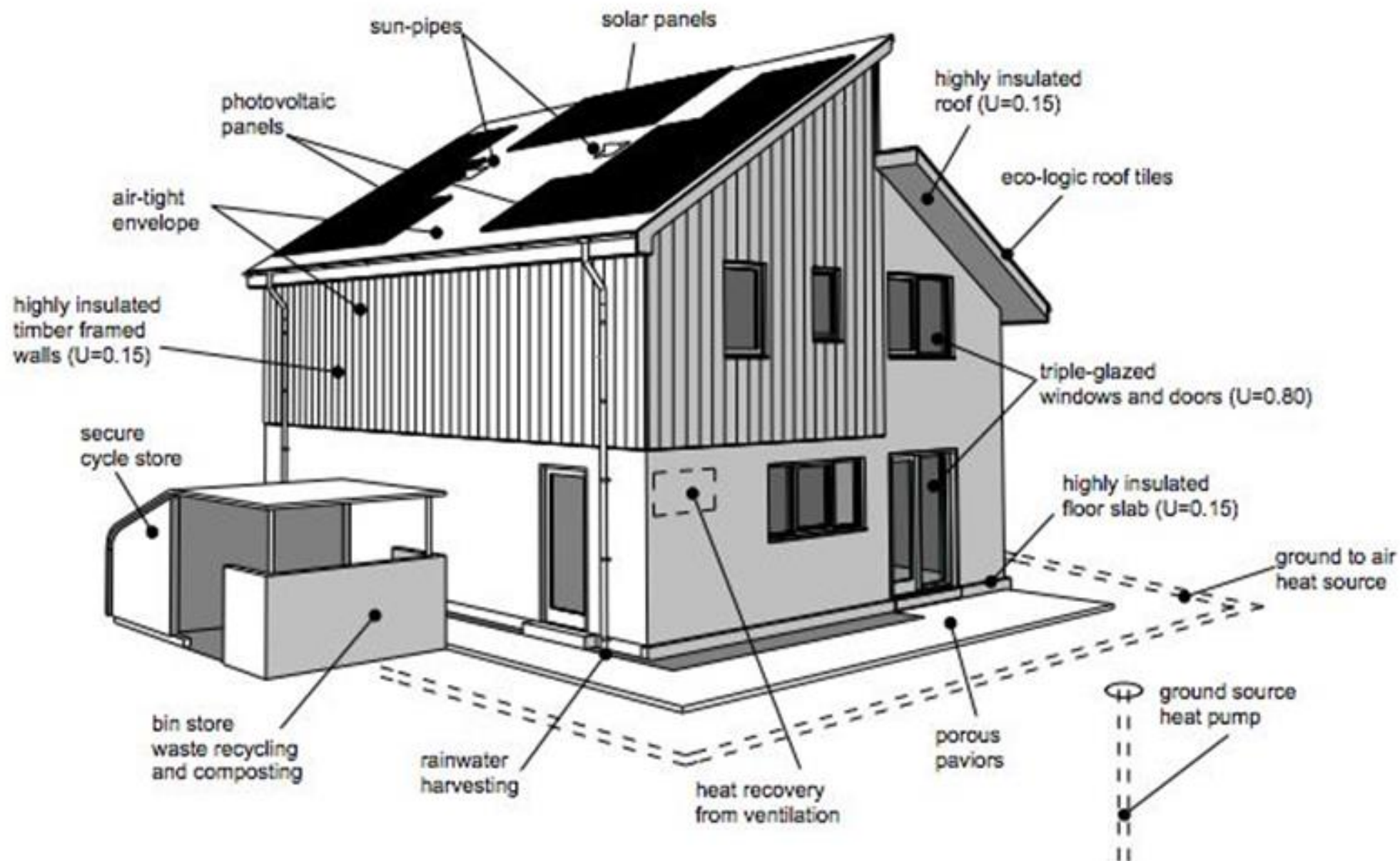




2008 Lord Adair Turner UK Climate Change Tsar





SLC

| Greenhouse Gas (GHG) Emissions (CO2e tonnes) | | 2010 / 11 | 2011 / 12 | |
|---|---------------------------|--|-----------------|-----------------|
| Gross Emissions (tonnes CO2e) | Scope 1 | Fossil fuels: Non-residential | 397241 | 341742 |
| | | Residential | 0 | 0 |
| | | Farms | 0 | 0 |
| | | Fleet Vehicles | 8820 | 8124 |
| | Scope 2 | Grid Electricity (kWh) | 1094741 | 104747 |
| | | Heat & Steam (ie purchased from NHS) | 0 | 0 |
| | Scope 3 | Water & Sewerage (m3) | 2361 | 2330 |
| | | Waste sent to landfill (tonnes) | 24138 | 20169 |
| | | Recycled waste (tonnes) | | |
| | | Staff & Student Commuting (km) | 0 | 0 |
| | Business Travel (km) | 0 | 7766 | |
| Consumption | | Residential Gas (kWh) | 0 | 0 |
| | | Non-residential Gas (kWh) | 149221 | 1848952 |
| | | Residential Electricity Purchased (kWh) | 0 | 0 |
| | | Non-residential Electricity Purchased (kWh) | 2330 | 2034797 |
| | | Heat/Steam | 0 | 0 |
| | | Water (m3) | 9780 | 10550 |
| | | Fleet - Petrol (Ltr) | 0 | 0 |
| | | Fleet - Diesel (Ltr) | 3295 | 3035 |
| | | Grey, Leased (personal & hire - Petrol) (km) | 0 | 0 |
| | | Grey, Leased (personal & hire - Diesel) (km) | 0 | 0 |
| | | Electric Vehicles (km) | 0 | 0 |
| | | Lease Vehicles (km) | 0 | 0 |
| | | Business travel (miles) | | 22267 |
| | | Waste | | |
| | | to landfill | 122.45 | 101.35 |
| | | recycled | 468.04 | 445.05 |
| Expenditure | | Total Energy Supplies | £205,738 | £207,830 |
| | | Total Services | £25,798 | £54,021 |
| | | Total Waste and Recycling | £45,132 | £45,387 |
| | | Total Fleet Vehicle Fuel | £4,180 | £4,205 |
| | | Total Business Travel | | £8,906 |
| Data | | Number of staff (FTE) | 205 | 205 |
| | | Number of students (FTE) | 2200 | 2334 |
| | | Gross internal area (sq mtr) residential | 0 | 0 |
| | | Gross internal area (sq mtr) non-residential | 18000 | 18000 |
| | | Total Income (£) | £ 11,100,000.00 | £ 10,356,000.00 |
| | | Estimated savings (£) from CCAP implementation | | |
| Prepared by: | Angus Allan | | | |
| Position: | Depute Principal | | | |
| Institution: | South Lanarkshire College | | | |



South
Lanarkshire
College
East Kilbride

Universities & Colleges
Climate Commitment for Scotland

“Lowering energy use,
lowering carbon emissions,
and developing our curriculum”

Climate Disruption Action Plan 2010-2015
March 2010





South
Lanarkshire
College
East Kilbride





South
Lanarkshire
College
East Kilbride

We aim to
promote
SUSTAINABLE
behaviours.

2012-14

3





Actions:

i. Define and meet energy targets

iii. Encourage staff to consider sustainability as part of their teaching

ii. Adopt low-resource approaches where possible

iv. Encourage all people in the college to think about resource use

v. Construct a new showcase building to the highest environmental standards and achieve an “outstanding” BREEAM rating under the 2014 standard



S
L
College
East Kilbride



LESSON PLAN N°:

UNIT TITLE:

UNIT CODE:

OUTCOME/
ELEMENT:

STUDENT GROUP(s): _____

| Essential Skills (✓) | | | | | | | |
|----------------------------|--|------------------------|--|------------------------------------|--|--------------------------------|--|
| Core | | Employability | | Citizenship | | Personal Skills | |
| Numeracy | | Timekeeping/Attendance | | Fundraising | | Reflective Practice | |
| Communication | | Organising Work | | Voluntary Work | | Entrepreneurialism | |
| ICT | | Managing Deadlines | | Club Membership | | Career Development | |
| Problem Solving | | Working in a Team | | Environmental Issues | | Self-Awareness and Improvement | |
| Working <u>With</u> Others | | Problem Solving | | Social & Cultural Responsibilities | | | |
| | | | | Equality & Diversity | | | |



SUSTAINABILITY GROUP



Engaged sub-contractors through the Sustainability Group

In Scotland we throw away:

Dairy

£93 million of dairy waste every year = enough for everyone in Scotland to have milk on their cereal for the next 6 months

85,000 litres of milk is thrown out untouched. That's the output of 1300 cows.



LOVE
FOOD
hate waste

Environmental impact

If we all stop wasting food that could have been eaten, the benefit to the planet would be the equivalent of taking 1 in 4 cars off the road.



LOVE
FOOD
hate waste

DID YOU KNOW?

The waste of good food and drink is associated with 4% of Scotland's total water footprint.



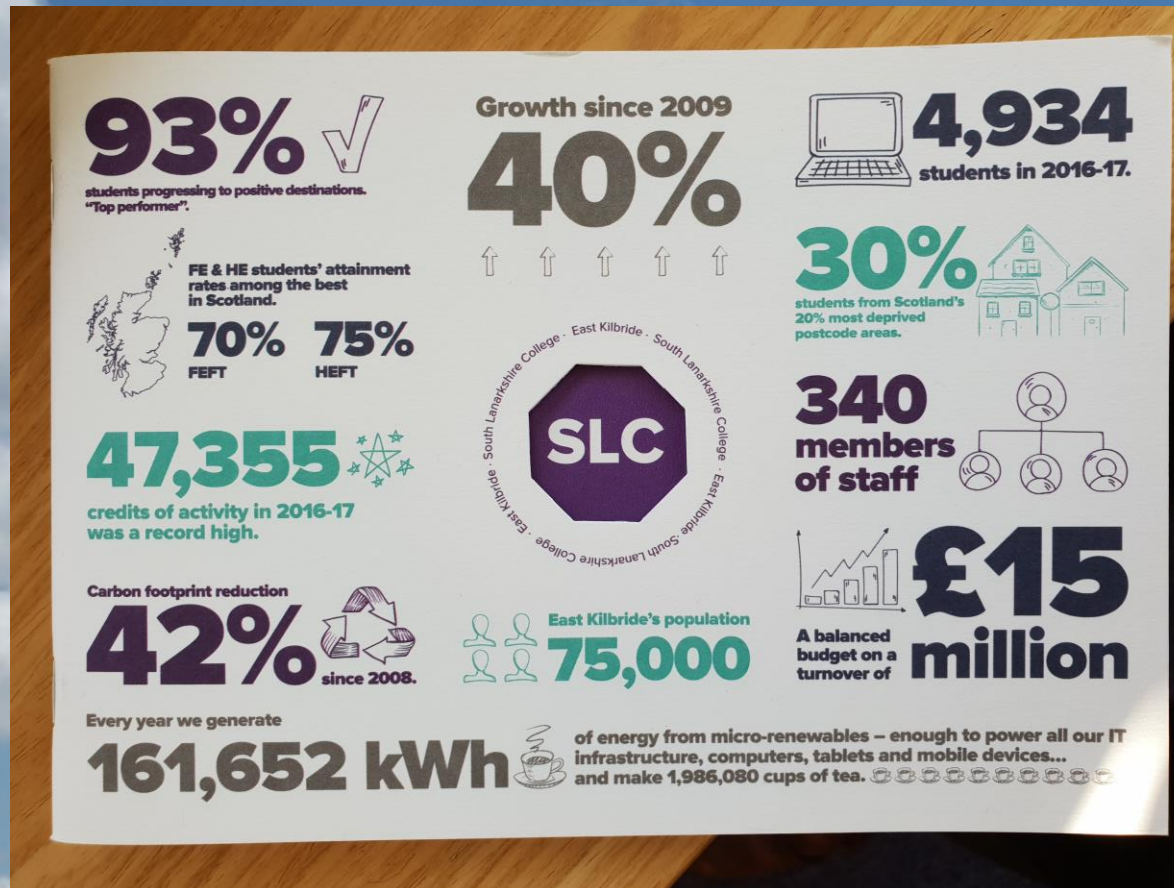
Move away from glossy corporate documents





2014-15

Incorporate sustainability reporting into normal annual reporting cycle





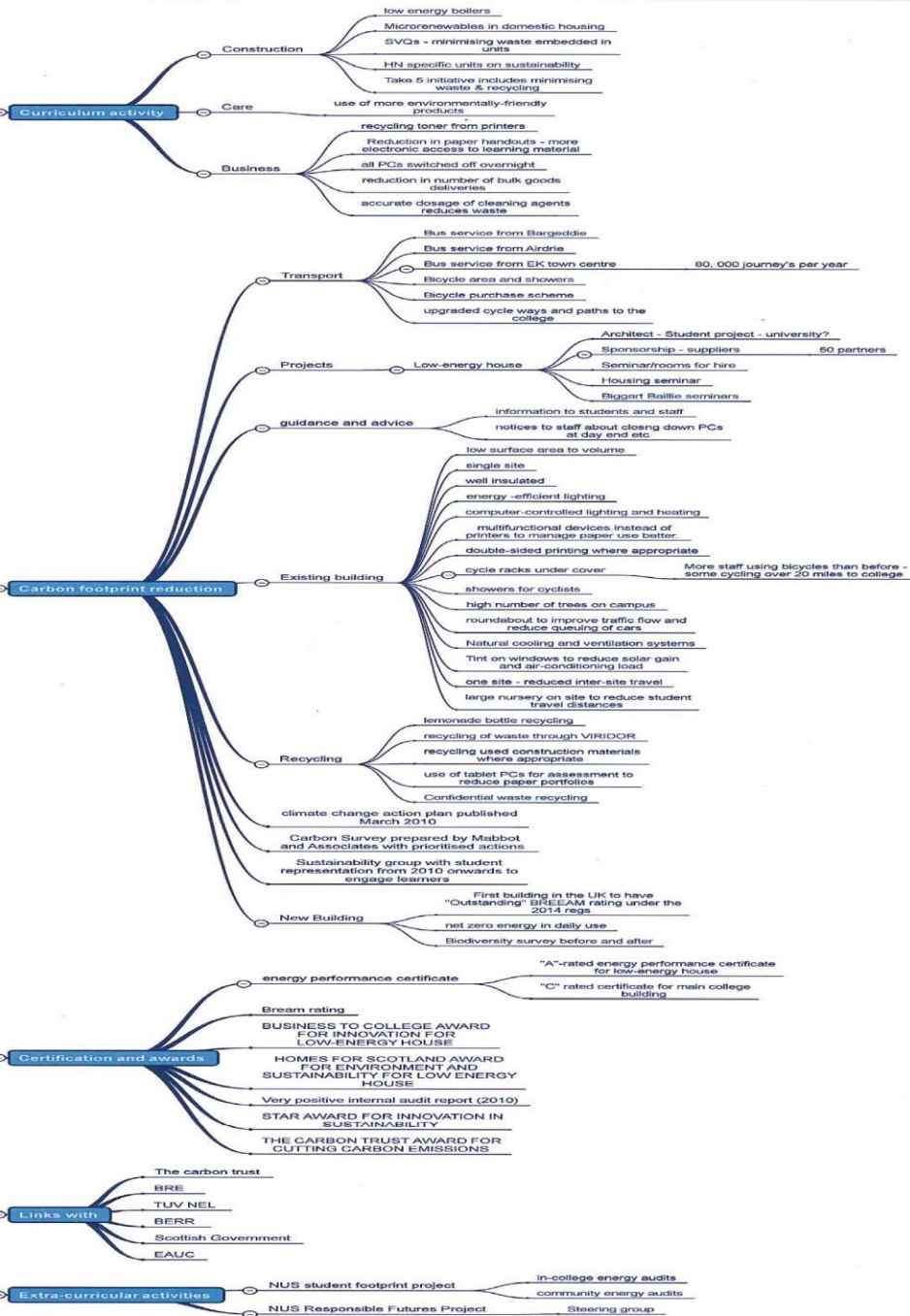
South
Lanarkshire
College

East Kilbride





Sustainable development





South
Lanarkshire
College
East Kilbride



“All I really need to know, I learned in Kindergarten” Robert Fulgham(1986)

My Kindergarten teacher told me to:

- *Play Fair*
- *Clean up my mess*
- *Share my cookies*
- *Don't take things that aren't mine*
- *Hold hands crossing the street*





Questions? (20 seconds)